

Data Sheet

KCTD13, GST-tag

Human, recombinant, N-terminal GST-tag
Catalog #: 80410
Lot #: 150114-G **Conc.:** 0.16 mg/ml

Formulated in: 40 mM Tris-HCl, pH 8.0,
110 mM NaCl, 2.2 mM KCl, 0.04%
Tween-20, 20% glycerol

Stability: At least 6 months at -80°C .
*Avoid freeze/thaw cycles. Storing diluted
enzyme is not recommended, if
necessary, use carrier protein (BSA 0.1
– 0.5%).*

References:

1. Golzio, C. *et al.*, *Nat. Let.* 2012; **485**:
363-367.
2. Chen, Y. *et al.*, *Mol. Cell.* 2009;
35(6): 841-855.

Description: Human Potassium Channel Tetramerization Domain Containing 13 (KCTD13) protein, also known as BTB/POZ domain-containing adapter for CUL3-mediated RhoA degradation protein 1 (BACURD1), GenBank Accession No. NM_178863, a.a. 2-329(end) with N-terminal GST-tag, MW = 63 kDa, expressed in a baculovirus-infected Sf9 cell expression system.

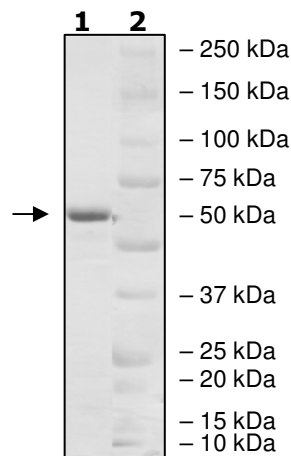
Application: Useful for the study of enzyme kinetics, screening inhibitors, and selectivity profiling.

Quality Assurance

4-20% SDS-PAGE Coomassie staining

Lane 1:
3 μg KCTD13
Lane 2:
Protein Marker

Purity: $\geq 87\%$
MW: 63 kDa



OUR PRODUCTS ARE FOR RESEARCH USE ONLY. NOT FOR DIAGNOSTIC OR THERAPEUTIC USE.

To place your order, please contact us by Phone **1.858.829.3082** Fax **1.858.481.8694**
Or you can Email us at: info@bpsbioscience.com
Please visit our website at: www.bpsbioscience.com