

## Data Sheet

### UBE1, FLAG-Tag

Human, Recombinant, N-terminal FLAG-tag

**Catalog #:** 80301

**Lot #:** 200414

**Conc.:** 1.02 mg/ml

**Formulated in:** 40 mM Tris-HCl, pH 8.0, 110 mM NaCl, 2.2 mM KCl, 0.04% Tween20, 20% glycerol, 3 mM DTT, 80 µg/ml FLAG peptide.

**Stability:** At least 6 months at -80°C. Avoid freeze/thaw cycles.

**References:**

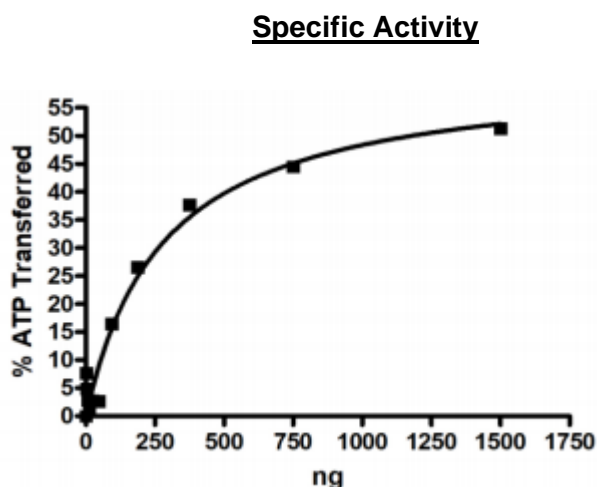
1. Su Z.L. *et al.*, *Leuk. Lymphoma* **49** (9), 1821-1822 (2008).
2. Ramser J. *et al.*, *Am. J. Hum. Genet.* **82** (1), 188-193 (2008).

**Description:** Human Ubiquitin Activating Enzyme (E1) (UBE1), also known as UBA1, GenBank Accession No. NM\_003334, a.a. 2-1058(end), with N-terminal FLAG-tag, expressed in a Baculovirus infected Sf9 cell expression system, MW=119 kDa.

**Specific Activity:** 5 pmole/min/µg  
 Assay Conditions: Assay was done according to UBE1 Inhibitor Screening Assay Kit (BPS Bioscience #79957) with UBE1 titrated from 1500 ng/rxn to 0 ng/rxn.

**Application:** Useful in conjunction with E2 and E3 for the study of enzyme kinetics, screening inhibitors, and selectivity profiling.

### Quality Assurance



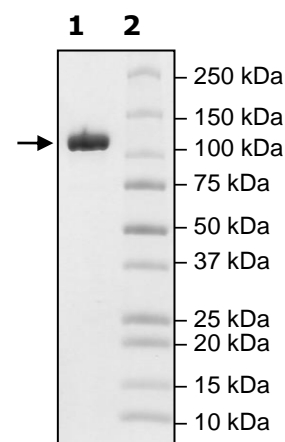
**4-20% SDS-PAGE  
Coomassie staining**

**Lane 1:**  
UBE1

**Lane 2:**  
Protein Marker

**Purity:** ≥90%

**MW:** 119 kDa



OUR PRODUCTS ARE FOR RESEARCH USE ONLY. NOT FOR DIAGNOSTIC OR THERAPEUTIC USE.

To place your order, please contact us by Phone **1.858.202.1401** Fax **1.858.481.8694**

Or you can Email us at: [info@bpsbioscience.com](mailto:info@bpsbioscience.com)

Please visit our website at: [www.bpsbioscience.com](http://www.bpsbioscience.com)