

## Data Sheet

### CBLC, FLAG-Tag

Human, Recombinant, N-terminal FLAG-tag

**Catalog #:** 100332

**Lot #:** 190401

**Conc.:** 0.15 mg/ml

**Formulated in:** 40 mM Tris-HCl, pH 8.0, 110 mM NaCl, 2.2 mM KCl, 0.04% Tween-20, 20% Glycerol and 100 µg/mL FLAG peptide.

**Stability:** At least 6 months at -80°C. Avoid freeze/thaw cycles.

#### References:

1. Keane, M.M., *Oncogene*, 1999 June; **18**: 3365-3375.
2. Griffiths, E.K., *Molec. and Cellular Bio.* 2003; Oct. **23(21)**:7708-7718

#### Description:

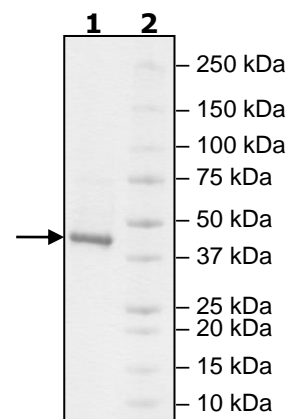
Human CBLC, also known as CBL-3, Cbl Proto-Oncogene C, Signal Transduction Protein CBL-C, and Cbl Proto-Oncogene C, E3 Ubiquitin Protein Ligase, Genbank Accession No. NM\_012116, a.a. 11-404 with N-terminal FLAG-tag, expressed in a HEK293 expression system. MW = 45 kDa.

## Quality Assurance

#### 4-20% SDS-PAGE Coomassie staining

**Lane 1:**  
2 µg CBLC  
**Lane 2:**  
Protein Marker

**MW:** 45 kDa  
**Purity:** ≥90%



OUR PRODUCTS ARE FOR RESEARCH USE ONLY. NOT FOR DIAGNOSTIC OR THERAPEUTIC USE.

To place your order, please contact us by Phone **1.858.202.1401** Fax **1.858.481.8694**

Or you can Email us at: [info@bpsbioscience.com](mailto:info@bpsbioscience.com)

Please visit our website at: [www.bpsbioscience.com](http://www.bpsbioscience.com)