

Data Sheet

CUL2, FLAG-Tag

Human, Recombinant, N-terminal FLAG-tag

Catalog #: 100294

Lot #: 190312

Conc.: 0.167 mg/ml

Formulated in: 40 mM Tris-HCl, pH 8.0, 110 mM NaCl, 2.2 mM KCl, 0.04% Tween20, 20% glycerol, 3 mM DTT, 80 µg/ml FLAG peptide

Stability: At least 6 months at -80°C. Avoid freeze/thaw cycles.

References:

1. Kamura, T.. *et al.*, *Genes & Dev.* (2004); **18**: 3055-3065
2. Lonergan, K.M., *et al.*, *Molecular & Cell Bio.* (1998); **18(2)**: 732-741.

Description:

Human CUL2, also known as Cullin-2 and CUL-2 with N-terminal FLAG-tag, a.a 2-745 (end), GenBank Accession No. NM_003591, expressed in a HEK293 expression system. MW = 88 kDa.

Quality Assurance

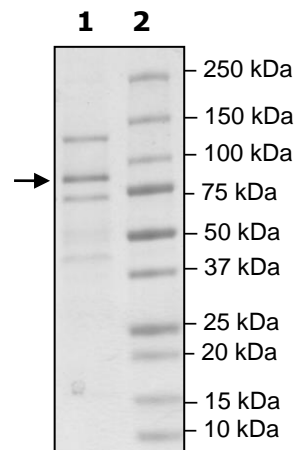
4-20% SDS-PAGE Coomassie staining

Lane 1:
CUL2

Lane 2:
Protein Marker

Purity: ≥45%

MW:
88 kDa



OUR PRODUCTS ARE FOR RESEARCH USE ONLY. NOT FOR DIAGNOSTIC OR THERAPEUTIC USE.

To place your order, please contact us by Phone **1.858.202.1401** Fax **1.858.481.8694**

Or you can Email us at: info@bpsbioscience.com

Please visit our website at: www.bpsbioscience.com