

Data Sheet

RdRp/NSP7/NSP8 (SARS-CoV-2) Complex

SARS-CoV-2, Recombinant

Catalog #: 100839

Lot #: 200729-G2

Conc.: 0.52 mg/ml

Formulated in: 20 mM Tris-HCl pH 8.0, 250 mM NaCl, 4 mM MgCl₂, 1 mM TCEP and 10% glycerol.

Stability: At least 6 months at -80°C. Avoid freeze/thaw cycles.

References:

1. Peng, Q. *et al.*, *Cell Reports* 2020; **31(11):** 107774
2. Ruan, Z. *et al.*, *Preprints* 2020; doi: **10.20944/preprints202003.0024.v1**

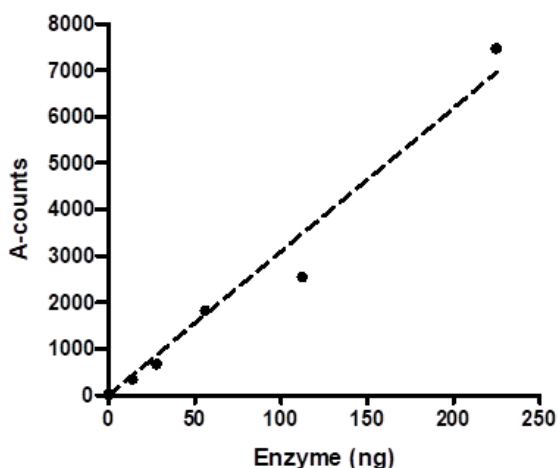
Description: RdRp/NSP7/NSP8 complex of SARS-CoV-2 RNA dependent RNA polymerase (**RdRp**), also known as NSP12, GenBank Accession No. YP_00972530, a.a. 1-932(full length), with an N-terminal FLAG-tag, MW=108 kDa; SARS-CoV-2 nonstructural protein 7 (**NSP7**), Genbank Accession No.: YP_009742614, a.a. 1-84(full length), with C-terminal His-tag, MW= 10 kDa, and SARS-CoV-2 nonstructural protein 8 (**NSP8**), Genbank Accession No.: YP_009725304.1, a.a. 1-198(full length), with C-terminal His-tag, MW= 23 kDa, individually expressed in a HEK293/E. coli expression system.

Assay Conditions: RNA-dependent RNA polymerase was incubated with Dig-RNA Duplex in the presence of biotinylated ATP for 60 min at 37°C. A-Dig acceptor beads were then added followed by addition of Streptavidin Donor beads. Increase in A-counts is proportional to the amount of ATP incorporated in the RNA.

Applications: Useful for the study of enzyme kinetics, screening inhibitors, and selectivity profiling.

Quality Assurance

RdRp/NSP7/NSP8 (SARS-CoV-2) Activity



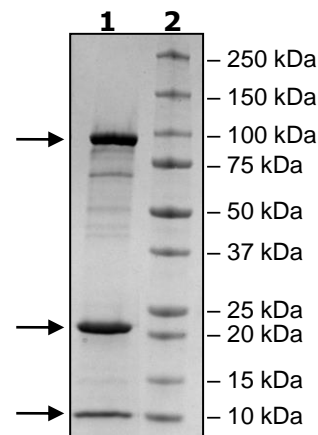
4-20% SDS-PAGE Coomassie staining

Lane 1:
4µg SARS CoV-2
RNA pol complex

Lane 2:
Protein Marker

MW: RdRp: 108 kDa
NSP8: 23 kDa
NSP7: 10 kDa

Purity: 90%



OUR PRODUCTS ARE FOR RESEARCH USE ONLY. NOT FOR DIAGNOSTIC OR THERAPEUTIC USE.

To place your order, please contact us by Phone **1.858.202.1401** Fax **1.858.481.8694**

Or you can Email us at: info@bpsbioscience.com

Please visit our website at: www.bpsbioscience.com