

Data Sheet

3CL Protease (SARS-CoV-2)

SARS-CoV-2, Recombinant

Catalog #: 100823

Lot #: 200801-B **Conc:** 5.48 mg/ml

Formulated in: 40 mM Tris-HCl pH 8.0, 110 mM NaCl, 2.2 mM KCl, 0.04% Tween-20, 3 mM DTT and 20% glycerol.

Stability: At least 6 months at -80°C. Avoid freeze/thaw cycles.

References:

1. Zhang, L., *et al.*, *Science*, 2020 Apr; **368(6489)**: 409-412.
2. Hsu, M.F. *et al.*, *JBC*. 2005 Mar; **280**:31257-31266.

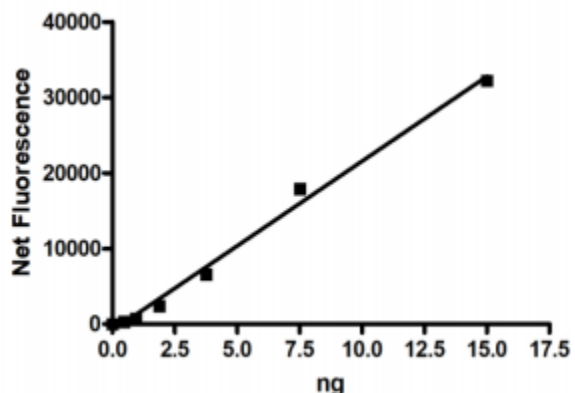
Description: Severe acute respiratory Coronavirus 2 3C-like protease (SARS-CoV-2 3CL Protease), GenBank Accession No. YP_009725301, a.a. 1-306(full length), expressed in an *E. coli* expression system, MW=34 kDa.

Assay conditions: Assay was done according to the 3CL Protease (SARS-CoV-2) Assay Kit protocol (BPS Bioscience, #79955-1) with 3CL Protease titrated from 30 ng/rxn -0 ng/rxn.

Applications: Useful for the study of enzyme kinetics, screening inhibitors, and selectivity profiling.

Quality Assurance

3CL Protease SARS-CoV-2 Activity



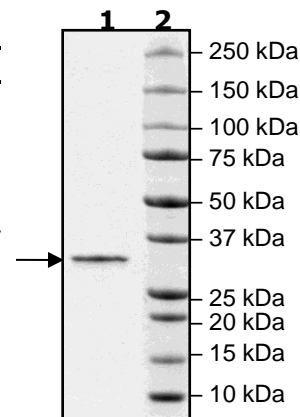
4-20% SDS-PAGE
Coomassie staining

Lane 1:
1 µg 3CL (tagless)

Lane 2:
Protein Marker

MW: 34 kDa

Purity: >90%



OUR PRODUCTS ARE FOR RESEARCH USE ONLY. NOT FOR DIAGNOSTIC OR THERAPEUTIC USE.

To place your order, please contact us by Phone **1.858.202.1401** Fax **1.858.481.8694**

Or you can Email us at: info@bpsbioscience.com

Please visit our website at: www.bpsbioscience.com