

## Data Sheet

### *PTP $\sigma$* (PTPRS)

Human, recombinant, N-terminal GST tag

**Catalog #:** 30045

**Lot #:** 131002-G2

**Conc.:** 0.1 mg/ml

**Formulated in:** 40 mM Tris-HCl pH 8.0, 110 mM NaCl, 2.2 mM KCl, 0.04% Tween-20, 16 mM Glutathione, 3 mM DTT and 20% glycerol.

**Stability:** >6 months at  $-80^{\circ}\text{C}$ . *Avoid freeze/thaw cycles. Storing diluted enzyme is not recommended, if necessary, use carrier protein (BSA 0.1 – 0.5%).*

**References:**

1. Forrest, A.R., *et al.*, *Genome Biol.* 2006;**7**(1):R5.
2. Muise, A, *et al.*, *Expert Rev Mol Diagn.* 2008 Jul;**8**(4):465-77.

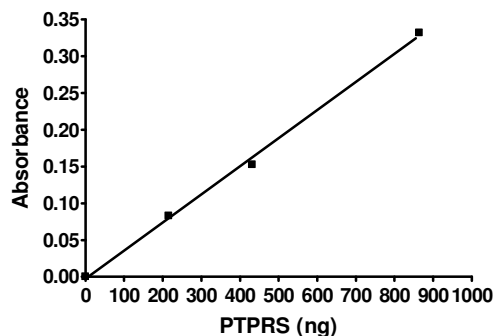
**Description:** Human PTPsigma, also known as PTPRS, (GenBank Accession No. BC1048212) a.a. 883-end, with N-terminal GST-tag, MW = 98 kDa, expressed in an *E. coli* expression system.

**Specific Activity:** 200 pmol/min/ $\mu\text{g}$   
 Assay buffer: 20 mM HEPES, pH 7.2, 2 mM EDTA, 1 mM DTT, and 25 mM pNPP. Assay was done at room temperature for 30 minutes, and monitored continuously at Abs405 nM.  $\epsilon$  of pNPP =  $18,000 \text{ M}^{-1}\text{cm}^{-1}$

**Application:** Useful for the study of enzyme kinetics, screening inhibitors,

## Quality Assurance

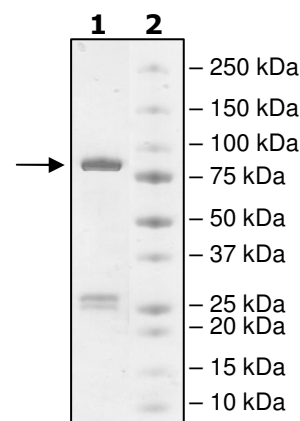
**Specific Activity**



**4-20% SDS-PAGE  
Coomassie staining**

**Lane 1:**  
2  $\mu\text{g}$  PTPRS  
**Lane 2:**  
Protein Marker

**MW:** 98 kDa  
**Purity:**  $\geq 60\%$



OUR PRODUCTS ARE FOR RESEARCH USE ONLY. NOT FOR DIAGNOSTIC OR THERAPEUTIC USE.

To place your order, please contact us by Phone **1.858.829.3082** Fax **1.858.481.8694**

Or you can Email us at: [info@bpsbioscience.com](mailto:info@bpsbioscience.com)

Please visit our website at: [www.bpsbioscience.com](http://www.bpsbioscience.com)