

## Data Sheet

### MEG-1

Human, recombinant, N-terminal GST tag  
**Catalog #:** 30015  
**Lot #:** 91028                      **Conc.:** 1 mg/ml

**Formulated in:** 40 mM Tris-HCl, pH 8.0,  
 110 mM NaCl, 2.2 mM KCl, 20% glycerol,  
 16 mM glutathione, and 3 mM DTT.

**Stability:** >6 months at -80°C

**References:**

1. K. Hironaka, *et al.*, *J. Biol.Chem.* 2000, **275**: 16167-16173.
2. M. Gu, *et al.* *Proc. Natl. Acad. Sci.* 1996, **93**: 12980-12985.

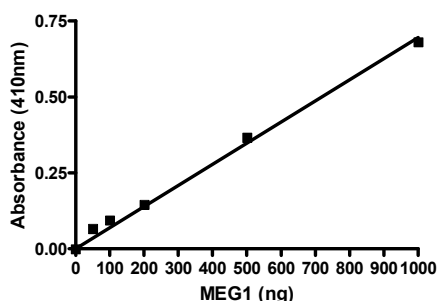
**Description:** MEG-1 protein tyrosine phosphatase (PTP-MEG-1), Catalytic domain, (a.a. 637-926) with N-terminal GST tag, MW=60.3 kDa, expressed in an E.coli expression system.

**Specific Activity:** 4.6 U/μg. One unit will hydrolyze 1 nmol p-nitrophenyl phosphate per minute at pH 7.4 and 37°C. Assay buffer: 50 mM HEPES, pH 7.4, 2 mM EDTA, 3 mM DTT, 100 mM NaCl, 50 mM pNPP.

**Application:** Useful for the study of enzyme kinetics, screening inhibitors, and selectivity profiling.

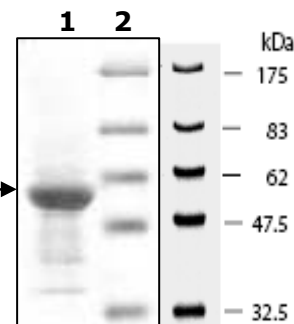
## Quality Assurance

**MEG-1 Specific Activity**



**10% SDS-PAGE**  
**Coomassie staining**

**Lane 1:**  
 6 μg MEG1 →  
**Lane 2:**  
 Protein Marker  
 BioLabs (#P7708L)



**MW:** 60.3 kDa  
**Purity:** ≥90%

OUR PRODUCTS ARE FOR RESEARCH USE ONLY. NOT FOR DIAGNOSTIC OR THERAPEUTIC USE.

To place your order, please contact us by Phone **1.858.829.3082** Fax **1.858.481.8694**  
 Or you can Email us at: [info@bpsbioscience.com](mailto:info@bpsbioscience.com)  
 Please visit our website at: [www.bpsbioscience.com](http://www.bpsbioscience.com)