

## Data Sheet

### PRL3

Human, recombinant, N-terminal HIS tag

**Catalog #:** 30002

**Lot#:** 130220-G      **Conc.:** 0.54 mg/ml

**Formulated in:** 40 mM Tris-HCl, pH 8.0,  
 110 mM NaCl, 2.2mM KCl, 20% glycerol,  
 and 3 mM DTT.

**Stability:** >6 months at -80°C

**References:**

1. Dai N. *et al.*, *World J. Gastroenterol.* **15** (12), 1499-1505 (2009).
2. Radke I. *et al.*, *Br. J. Cancer.* **95** (3), 347-354 (2006).

**Description:**

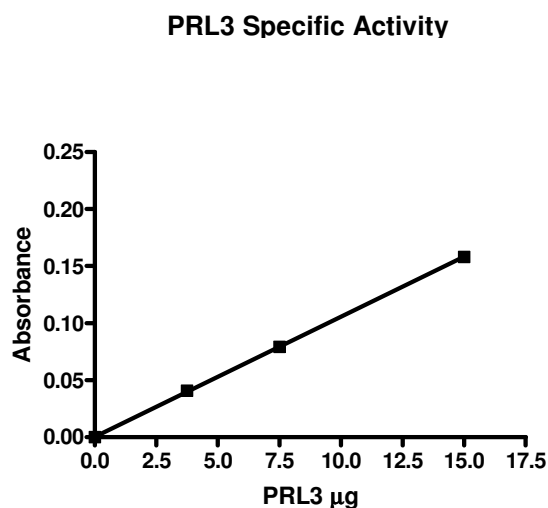
Human PRL 3 (GenBank Accession No. NM\_032611), (a-a 2-173) with N-terminal HIS tag, MW = 20.4 kDa, expressed in an *E. coli* expression system.

**Specific Activity:** 0.53 pmol/min/μg,  
 Assay conditions: enzyme was incubated in 50 mM Tris pH7.4, 150 mM NaCl 5 mM DTT, and 12.5 mM PNPP as a substrate for 2h at 37°C. Absorbance was read by Tecan spectrophotometer at 405 nm wavelength.

**Application:**

Useful for the study of enzyme kinetics, screening inhibitors, and selectivity profiling.

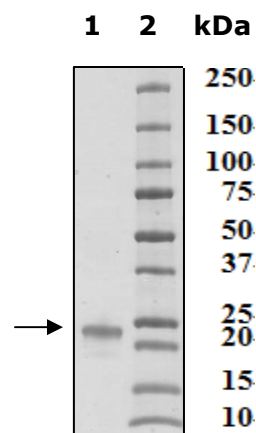
### Quality Assurance



**4-20% SDS-PAGE**  
**Coomassie staining**

**Lane 1:**  
 3 μg PRL3  
**Lane 2:**  
 Protein Marker  
 BioLabs (#P7708L)

**MW:** 20.4 kDa  
**Purity:** ≥90%



OUR PRODUCTS ARE FOR RESEARCH USE ONLY. NOT FOR DIAGNOSTIC OR THERAPEUTIC USE.

To place your order, please contact us by Phone **1.858.829.3082** Fax **1.858.481.8694**

Or you can Email us at: [info@bpsbioscience.com](mailto:info@bpsbioscience.com)

Please visit our website at: [www.bpsbioscience.com](http://www.bpsbioscience.com)