

Data Sheet

Renin, His-Tag

Human, Recombinant, C-terminal His-tag
Catalog #: 80200
Lot #: 161221 **Conc.:** 0.82 mg/ml

Formulated in: 40 mM Tris-HCl, pH 8.0, 110 mM NaCl, 2.2 mM KCl, 200 mM Imidazole and 20% glycerol.

Stability: At least 6 months at -80°C . Avoid freeze/thaw cycles.

References:

1. Cho, M.J., *et al.*, *J Pediatr Endocrinol Metab.* 2011; **24(11-12)**:1085 – 1087.
2. Schnermann, J., *et al.*, *Kidney Int.* 2012 Mar; **81(6)**: 529 – 538.

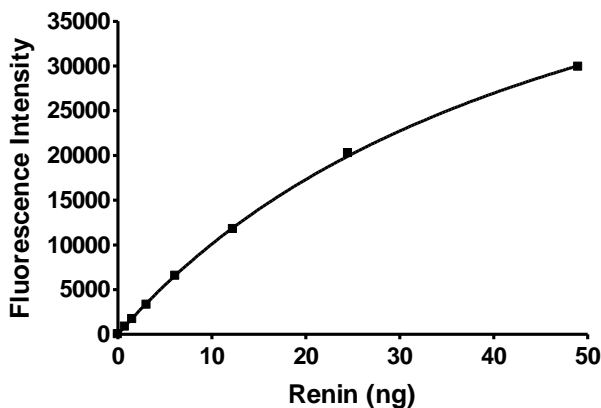
Description: Human Activated Renin, also known as Angiotensinogenase, Renin Protein, Renin protease, renin angiotensin aldosterone system, and renin angiotensin aldosterone, GenBank Accession No. NM_000537, a.a. 67–406(end) with C-terminal His-tag, expressed in a HEK293 expression system. MW=39 kDa.

Specific Activity: 240 pmol/min/ μg
 Assay conditions: 50 mM Tris-HCl, pH 7.4, 100 mM NaCl, 0.05% Tween 20, 7.5 μM renin substrate, 30 min, room temperature.

Applications: Useful for the study of enzyme kinetics, screening inhibitors, and selectivity profiling.

Quality Assurance

Specific Activity



4-20% SDS-PAGE
Coomassie staining

Lane 1:
3 μg Renin
Lane 2:
Protein Marker
MW: 39 kDa
Purity: $\geq 84\%$

