

## Data Sheet

### HCV1a (D168E), FLAG-His tag

Recombinant, N-terminal FLAG-His tag  
**Catalog #:** 80102  
**Lot #:** 130829-1      **Conc.:** 0.02 mg/ml

**Formulated in:** 40 mM Tris-HCl, pH 8.0, 110 mM NaCl, 2.2 mM KCl, 0.04% Tween-20, 20% glycerol, and 250 mM imidazole.

**Stability:** At least 6 months at  $-80^{\circ}\text{C}$ . *Avoid freeze/thaw cycles. Storing diluted enzyme is not recommended, if necessary, use carrier protein (BSA 0.1 – 0.5%).*

**References:**

1. Lenz, O., *et al.*, *J Hepatol.* 2013 Mar;**58(3)**:445-51.
2. Sheaffer, A.K., *et al.*, *Antivir Ther.* 2011;**16(5)**:705-18.

**Description:**

Fusion protein corresponding to the serine protease NS3 (a.a. 3-181) and cofactor NS4A (a.a. 21-32) from Hepatitis C virus genotype 1a (HCV1a), GenBank Accession No. NC\_004102, with Asp-to-Glu mutation on a.a. 168, and N-terminal FLAG-His tag, MW = 22.4 kDa, expressed in an *E. coli* expression system.

**Application:**

Useful for the study of enzyme kinetics, screening inhibitors, and selectivity profiling.

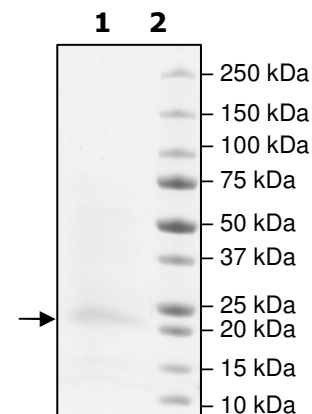
## Quality Assurance

**4-20% SDS-PAGE  
Coomassie staining**

**Lane 1:**  
1  $\mu\text{g}$  HCV1a (D168E)

**Lane 2:**  
Protein Marker

**Purity:**  $\geq 51\%$   
**MW:** 22.4 kDa →



OUR PRODUCTS ARE FOR RESEARCH USE ONLY. NOT FOR DIAGNOSTIC OR THERAPEUTIC USE.

To place your order, please contact us by Phone **1.858.829.3082** Fax **1.858.481.8694**  
Or you can Email us at: [info@bpsbioscience.com](mailto:info@bpsbioscience.com)  
Please visit our website at: [www.bpsbioscience.com](http://www.bpsbioscience.com)



6044 Cornerstone Court West, Suite E  
San Diego, CA 92121  
**Tel:** 1.858.829.3082  
**Fax:** 1.858.481.8694  
**Email:** [info@bpsbioscience.com](mailto:info@bpsbioscience.com)

**Sequence:**

MDYKDDDDKHHHHHGCVVIVGRIVLSGSGSITAYAQQTRGLLGCIITSLTGRDKNQVE  
GEVQIVSTATQTFLATCINGVCWTVYHGAGTRTIASPKGPVIQMYTNVDQDLVGWPAPQ  
GSRSLTPCTCGSSDLYLVTRHADVIPVRRRGDSRGSLLSPRPISYLGSSGGPLLCPAG  
HAVGLFRAAVCTRGVAKAV**E**FIPVENLETTMRS

**Red:** Flag-His tag

**Black without underline:** NS4A cofactor (a.a. 21-32) (NP\_751925)

**Blue:** Short linker

**Black with underline:** NS3 protease domain (a.a. 3-181) (NP\_803144)

**Yellow:** D168E

OUR PRODUCTS ARE FOR RESEARCH USE ONLY. NOT FOR DIAGNOSTIC OR THERAPEUTIC USE.

To place your order, please contact us by Phone **1.858.829.3082** Fax **1.858.481.8694**

Or you can Email us at: [info@bpsbioscience.com](mailto:info@bpsbioscience.com)

Please visit our website at: [www.bpsbioscience.com](http://www.bpsbioscience.com)