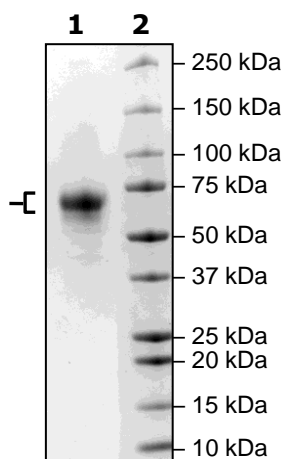


Product Information

Construct:	Cathepsin F (20-484(end)-His)
Concentration:	0.74 mg/ml
Species:	Human
Formulated In:	45 mM Na Acetate pH 5.5, 135 mM NaCl and 10% glycerol.
Expression System:	HEK293
Format:	Aqueous buffer solution
Stability:	At least 6 months at -80°C. Avoid freeze/thaw cycles.
Storage:	-80°C
Genbank Accession:	NM_003793
MW:	53 kDa
Purity:	≥90%
Specific Activity:	≥0.9 pmol/min/μg
Assay Conditions:	Reaction was done at 30°C for 40-120 min, and fluorescence signal was measured at Ex360 nm/Em460 nm. Enzyme was preactivated in 50 mM sodium acetate pH 4.5, 5 mM DTT buffer for 90 min at room temperature prior to reaction.
Applications:	Useful for the study of enzyme kinetics, screening inhibitors, and selectivity profiling.
Notes:	This protein runs at a higher MW by SDS-PAGE due to glycosylation.

Quality Control Data

4-20% SDS-Page Coomassie Staining



Specific Activity

