



6042 Cornerstone Court W, Ste B  
San Diego, CA 92121  
**Tel:** 1.858.202.1401  
**Fax:** 1.858.481.8694  
**Email:** [info@bpsbioscience.com](mailto:info@bpsbioscience.com)

## **Data Sheet**

### **FAP – CHO K1 Recombinant Cell Line**

#### **Low Expressions**

#### **Catalog # 79947-L**

#### **Background**

Fibroblast activation protein alpha (FAP-alpha) belongs to the dipeptidyl peptidase IV (DPP4; CD26) gene family and is a cell-surface serine protease that acts on various hormones and extracellular matrix components. FAP expression under physiological conditions is scarce in healthy adult tissues. But FAP gene is highly upregulated in a wide variety of cancers, and is often used as a marker for pro-tumorigenic stroma. It has also been proposed as a molecular target of cancer therapies, and a great deal of research has gone into design and testing of diverse FAP-targeted treatments.

#### **Description**

Recombinant FAP-CHO K1 cell line stably expressing a full length human FAP-alpha protein (Genbank accession No: NM004460.2). Surface expression of FAP was confirmed by flow cytometry. Each stable clonal cell line was selected for different levels of FAP expression (High, Medium, or Low) to mimic different stages of cancer target cells with various FAP expression levels.

#### **Application**

- Screen for activators or inhibitors of antibody-mediated signaling for immunotherapy research and drug discovery.
- Characterize FAP antibodies and ligands in binding assays.

#### **Format**

Each vial contains ~ 2 x 10<sup>6</sup> cells in 1 ml of 10% DMSO in FBS.

#### **Storage**

Store in liquid nitrogen immediately upon receipt.

#### **Culture Medium**

**Thaw Medium 3 (BPS Bioscience #60186):** Ham's F-12 medium (Hyclone #SH30526.01) supplemented with 10% FBS (Life technologies #26140-079), 1% Penicillin/Streptomycin (Hyclone #SV30010.01).

**Growth Medium 3B (BPS Bioscience #79529):** Thaw Medium 3 (BPS Bioscience #60186) plus 500 µg/ml Hygromycin B (Invitrogen, #10687010)

#### **Recommended Culture conditions**

*Frozen Cells:* Prepare T-75 culture flask with 20 ml of pre-warmed Thaw medium 3. Quickly thaw cells in a 37°C water bath with constant and slow agitation. After cleaning the outside of

OUR PRODUCTS ARE FOR RESEARCH USE ONLY. NOT FOR DIAGNOSTIC OR THERAPEUTIC USE.

To place your order, please contact us by Phone **1.858.829.3082** Fax **1.858.481.8694**

Or you can Email us at: [info@bpsbioscience.com](mailto:info@bpsbioscience.com)

Please visit our website at: [www.bpsbioscience.com](http://www.bpsbioscience.com)

the vial with 70% ethanol, immediately transfer the entire content to Thaw Medium 3 (no Hygromycin). Avoid pipetting up and down, and gently rock the flask to distribute the cells. Incubate the cells in a humidified 37°C incubator with 5% CO<sub>2</sub>. The next day, change to fresh Thaw Medium 3 without disturbing the attached cells. Continue to incubate until cells reach desired confluency. If slow cell growth occurs during resuscitation, increase FBS concentration to 15% for the first week of culture.

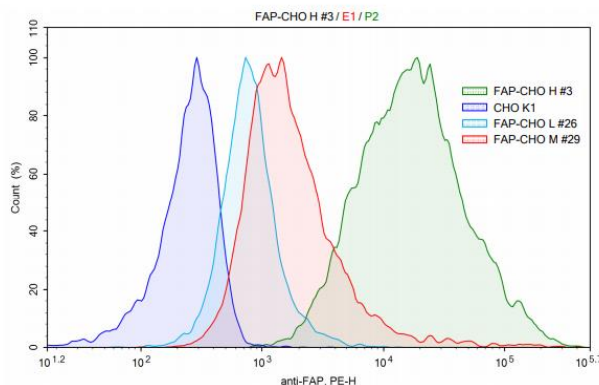
*Subculture:* When cells reach 90% confluency, remove the medium and wash twice with PBS (without Magnesium or Calcium). Treat cells with 2 ml of 0.25% trypsin/EDTA and incubate for 3 minutes at 37°C. After confirming cell detachment by light microscopy, add 10 ml of prewarmed medium and gently pipette up and down to dissociate cell clumps. Transfer cells to a 15 ml conical tube and centrifuge at 200 x g for 5 minutes. Remove the medium and resuspend cells in 10 ml pre-warmed growth medium. Dispense 1 ml of the cell suspension into a new T75 flask containing pre-warmed 19 ml complete medium (a subcultivation ratio of 1:10 to 1:20 is recommended). Incubate cells in a humidified 37°C incubator with 5% CO<sub>2</sub>. To freeze cells, resuspend cell pellet in freezing medium (10% DMSO in FBS).

## Mycoplasma Testing

This cell line has been screened using the MycoAlert™ Mycoplasma Detection Kit (Lonza, #LT07-118) to confirm the absence of Mycoplasma contamination. MycoAlert Assay Control Set (Lonza, #LT07-518) was used as a positive control.

## Validation

Cell surface expression of human FAP in CHO K1 cells was confirmed by flow cytometry.



**Figure 1.** Flow cytometry analysis of cell surface expression of FAP in CHO K1 cells. FAP-CHO K1 cells or control CHO K1 cells were stained with PE-labeled anti-human FAP antibody (R&D Systems #FAB3715P-025) and analyzed by FACS. Y-axis is the % cell number. X-axis is the intensity of PE. Parental CHO cells (blue); Low expression FAP-CHO cells (turquoise), Medium expression (red), High expression (green).

OUR PRODUCTS ARE FOR RESEARCH USE ONLY. NOT FOR DIAGNOSTIC OR THERAPEUTIC USE.

To place your order, please contact us by Phone **1.858.829.3082** Fax **1.858.481.8694**

Or you can Email us at: [info@bpsbioscience.com](mailto:info@bpsbioscience.com)

Please visit our website at: [www.bpsbioscience.com](http://www.bpsbioscience.com)



6042 Cornerstone Court W, Ste B  
San Diego, CA 92121  
**Tel:** 1.858.202.1401  
**Fax:** 1.858.481.8694  
**Email:** info@bpsbioscience.com

### Vector and Sequence

Human FAP-alpha (accession number: NM004460.2) was cloned into pCMV3.

MKTWVKIVFGVATSAVLALLVMCIVLRPSRVHNSEENTMRALTLKDILNGTFSYKTFPPNWISGQEYLHQS  
ADNNIVLYNIETGQSYTILSNRTMKSVNASNYGLSPDRQFVYLESDYSKLRYSYATATYYIYDLNNGEFVR  
GNELPRPIQYLCWSPVGSKLAYVYQNNIYLKQRPGDPPFQITFNGRENKIFNGIPDWVYEEEMLATKYAL  
WWSPNGKFLAYAEFNDDIPVIAYSYYGDEQYPRITINIPYKAGAKNPVVRIFIIDTTYPAYVGPQEVVPA  
MIASSDYFWSLWVTDERVCLQWLKRVQNVSVLSICDFREDWQWTWDCPKTQEHIEESRTGWAGGFFV  
STPVFSYDAISYYKIFSDKDGKHYKHIYKDTVENAIQITSGKWEAINIFRVTQDSLFFYSNEFEEYPGRRNIY  
RISIGSYPPSKKCVTCHLRKERCQYYTASFSDYAKYYALVCYGGPISTLHDGRTDQEIKILEENKELENA  
LKNIQLPKKEIKLEVDEITLWYKMLPPQFDRSKKYPLLIQVYGGPCSQSVRSVFAVNWISYLASKEGMVI  
ALVDGRGTAFQGDKLLYAVYRKLGVYEVEDQITAVRKFIEGMGFIDEKRIAIWGWWSYGGYVSSLALASGTGL  
FKCGIAPVSSWEYYASVYTERFMGLPTKDDNLEHYKNSTVMARAEYFRNVDYLLIHGTADDNVHFQN  
SAQIAKALVNAQVDFQAMWYSQNHGLSGLSTNHLYTHMTHFLKQCFSLSD

**License Disclosure:** Purchase of this cell line grants you with a 10-year license to use this cell line in your immediate laboratory, for research use only. This license does not permit you to share, distribute, sell, sublicense, or otherwise make the cell line available for use to other laboratories, departments, research institutions, hospitals, universities, or biotech companies. The license does not permit use of this cell line in humans or for therapeutic or drug use. The license does not permit modification of the cell line in any way. Inappropriate use or distribution of this cell line will result in revocation of the license and result in an immediate cease of sales and distribution of BPS products to your laboratory. BPS does not warrant the suitability of the cell line for any particular use and does not accept any liability in connection with the handling or use of the cell line. Modifications of this cell line, transfer to another facility, or commercial use of the cells may require a separate license and additional fees; contact sales@bpsbioscience.com for details. Publications using this cell line should reference BPS Bioscience, Inc., San Diego.

### Related Products

<u>Product</u>	<u>Cat. #</u>	<u>Size</u>
Thaw Medium 3	60186	100ml
Complete Growth Medium 3B	79529	500ml
FAP-CHO Recombinant Cell Line (Medium Expression)	79947-M	2 vials
FAP-CHO Recombinant Cell Line (Low Expression)	79947-L	2 vials
FAP-CHO Recombinant Cell Line (High Expression)	79947-H	2 vials
FAP Assay Kit	80210	96 rxns
FAP, His-tag (Human)	80100	25 µg
FAP, His-tag (Mouse)	100226	25 µg

OUR PRODUCTS ARE FOR RESEARCH USE ONLY. NOT FOR DIAGNOSTIC OR THERAPEUTIC USE.

To place your order, please contact us by Phone **1.858.829.3082** Fax **1.858.481.8694**

Or you can Email us at: [info@bpsbioscience.com](mailto:info@bpsbioscience.com)

Please visit our website at: [www.bpsbioscience.com](http://www.bpsbioscience.com)