

## Data Sheet

### TET2, FLAG-Tag, His-Tag (catalytic domain)

Human, Recombinant, N-terminal FLAG-tag,  
 C terminal His-tag

**Catalog #:** 50162

**Lot #:** 171205-2

**Conc:** 0.81 mg/ml

**Formulated in:** 40 mM Tris-HCl, pH 8.0, 110 mM NaCl, 2.2 mM KCl, 0.04% Tween20, 20% glycerol, 0.2mM TCEP

**Stability:** At least 6 months at  $-80^{\circ}\text{C}$ . Avoid freeze/thaw cycles.

**References:**

1. Myunggon, K., *et al.*, *Nature*. 2013;**497**: 122-126.
2. Shinsuke, I, *et al.*, *Nature*. 2010; **466**: 1129-1133.

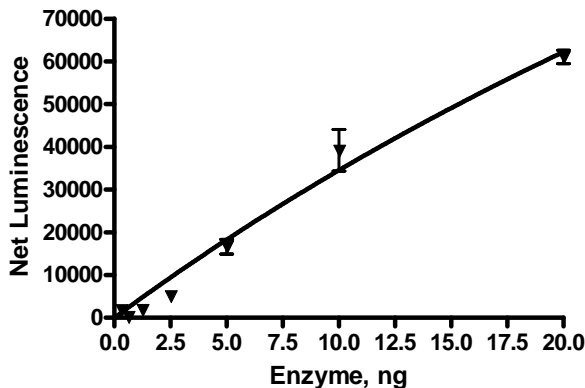
**Description:** Human Ten-eleven translocation 2 protein (TET2), methylcytosine dioxygenase TET2, GenBank Accession # NM\_001127208, a.a. 1129-2002 (end) with N-terminal FLAG-tag, C-terminal His-tag. MW = 100 kDa, expressed in Sf9 cells via a baculovirus expression system.

**Assay Description:** Reaction done according to TET2 Chemiluminescent Assay Kit (Catalog #50652). TET2 Enzyme was tested from 0 ng/ $\mu\text{l}$ -40 ng/ $\mu\text{l}$ . Kit conditions are 10 ng/ $\mu\text{l}$ .

**Application:** Useful for the study of enzyme kinetics, screening inhibitors, and selectivity profiling.

### Quality Assurance

**Specific Activity**



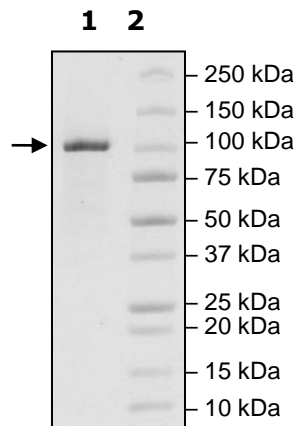
**4-20% SDS-PAGE**  
**Coomassie staining**

**Lane 1:**  
 TET2(1129-e)

**Lane 2:**  
 Protein Marker

**MW:** 100 kDa

**Purity:**  $\geq 90\%$



OUR PRODUCTS ARE FOR RESEARCH USE ONLY. NOT FOR DIAGNOSTIC OR THERAPEUTIC USE.

To place your order, please contact us by Phone **1.858.202.1401** Fax **1.858.481.8694**

Or you can Email us at: [info@bpsbioscience.com](mailto:info@bpsbioscience.com)

Please visit our website at: [www.bpsbioscience.com](http://www.bpsbioscience.com)