

Data Sheet

PLPro, His-tag (1541-1857) (SARS-CoV-1)

SARS-CoV-1, Recombinant, N-terminal His-tag
Catalog #: 100903
Lot #: 200925 **Conc:** 3.85 mg/ml

Formulated in: 40 mM Tris-HCl pH 8.0, 110 mM NaCl, 2.2 mM KCl, 0.04% Tween-20, 3 mM DTT, 20% glycerol and 200 mM Imidazole.

Stability: At least 6 months at -80°C. *Avoid freeze/thaw cycles.*

References:

1. Ma-Lauer, Y., *et al.*, *PNAS*, 2016 Aug; **113(35)**: E5192-E5201.
2. Mukherjee, S. D., *et al.*, *Eu. PMC*. 2020 May; **DOI**: 10.21203/rs.3.rs-27134/v1.

Description: Severe acute respiratory Coronavirus 1 Papain-Like Protease (PLPro), also known as PLP and NSP3, GenBank Accession No. NP_828862.2, a.a. 1541-1857 with N-terminal His-tag, expressed in an *E. coli* expression system, MW=37 kDa.

Note: Papain-like protease (PLPro), a.a. 819-2740, is a protein from SARS-CoV-1 which is processed/cleaved from the larger poly-protein 1ab, a.a. 1-7073. This product, a.a. 1541-1857, includes the protease domain of PLPro.

Quality Assurance

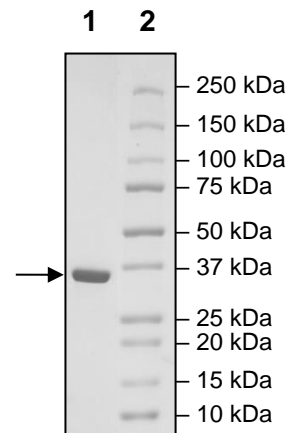
4-20% SDS-PAGE
Coomassie staining

Lane 1:
2 µg PLPro (1541-1857)

Lane 2:
Protein Marker

MW: 37 kDa

Purity: ≥90%



OUR PRODUCTS ARE FOR RESEARCH USE ONLY. NOT FOR DIAGNOSTIC OR THERAPEUTIC USE.

To place your order, please contact us by Phone **1.858.202.1401** Fax **1.858.481.8694**
Or you can Email us at: info@bpsbioscience.com
Please visit our website at: www.bpsbioscience.com