

Data Sheet

3CL Protease, His-tag (SARS-CoV)

SARS-CoV, Recombinant, C-terminal His-tag

Catalog #: 100807

Lot #: 200629

Conc: 0.40 mg/ml

Formulated in: 40 mM Tris-HCl, pH 8.0,
 110 mM NaCl, 2.2 mM KCl, 0.04%
 Tween20, 20% glycerol, 3 mM DTT, 200
 mM Imidazole

Stability: At least 6 months at -80°C. *Avoid freeze/thaw cycles.*

References:

1. Zhang, L., *et al.*, *Science*, 2020 Apr; **368(6489)**: 409-412.
2. Hsu, M.F. *et al.*, *JBC*. 2005 Mar; **280**:31257-31266.

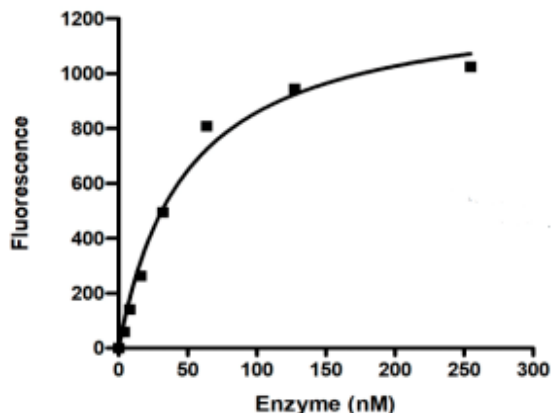
Description: Severe acute respiratory Coronavirus 3C-like protease (SARS-CoV 3CL Protease), GenBank Accession No. 1UK3_B, a.a. 1-306(full length), with a C-terminal His-tag, expressed in an *E. coli* expression system, MW=36 kDa.

Assay Conditions: Add 40 µl of 3CL protease diluted in 1x assay buffer. Start the reaction by adding 10 µl of diluted substrate. Immediately place plate in plate reader. Read kinetics for 60 min (λ_{exc} =360 nm, λ_{em} =460 nm). Total volume is 50 µl.

Applications: Useful for the study of enzyme kinetics, screening inhibitors, and selectivity profiling.

Quality Assurance

3CL Protease (SARS-CoV) Activity



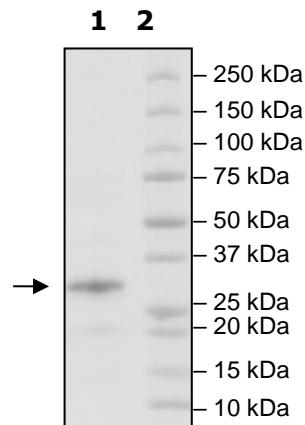
4-20% SDS-PAGE Coomassie staining

Lane 1:
3CL protease

Lane 2:
Protein Marker

MW: 36 kDa

Purity: >90%



OUR PRODUCTS ARE FOR RESEARCH USE ONLY. NOT FOR DIAGNOSTIC OR THERAPEUTIC USE.

To place your order, please contact us by Phone **1.858.202.1401** Fax **1.858.481.8694**

Or you can Email us at: info@bpsbioscience.com

Please visit our website at: www.bpsbioscience.com



6042 Cornerstone Court West, Suite B
San Diego, CA 92121
Tel: 1.858.202.1401
Fax: 1.858.481.8694
Email: info@bpsbioscience.com

OUR PRODUCTS ARE FOR RESEARCH USE ONLY. NOT FOR DIAGNOSTIC OR THERAPEUTIC USE.

To place your order, please contact us by Phone **1.858.202.1401** Fax **1.858.481.8694**
Or you can Email us at: info@bpsbioscience.com
Please visit our website at: www.bpsbioscience.com