

## Data Sheet

### ACE2, His-Avi-Tag, Biotin-labeled

Human, Recombinant, C-terminal His-Avi-tag,  
Biotin-labeled

**Catalog #:** 100665

**Lot #:** 200326

**Conc:** 0.64 mg/ml

**Formulated in:** 40 mM Tris pH 8.0, 110 mM NaCl, 2.2 mM KCl, 200 mM Imidazole and 20% glycerol.

**Stability:** At least 6 months at -80°C. Avoid freeze/thaw cycles.

**Description:** Human Angiotensin converting enzyme 2 (ACE2) also known ACEH, GenBank Accession No. NM\_021804.3, a.a. 18-740, with a C-terminal His-tag, expressed in a HEK293 expression system and enzymatically biotinylated using Avi-tag™ technology. Biotinylation is confirmed to be ≥90%. MW=86 kDa. This protein runs at a higher MW by SDS-PAGE due to glycosylation.

#### References:

1. Oudit, G.Y., *et al.*, *Trends in Cardio. Med.* 2003 Apr;**13(3)**:93-101.
2. Donoghue, M., *et al.*, *Circulation Research.* 2002 Sep;**87**:e1-e9

### Quality Assurance

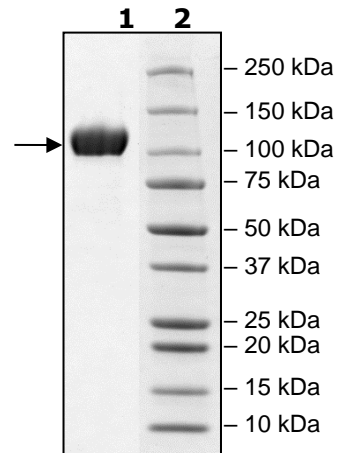
#### 4-20% SDS-PAGE Coomassie staining

**Lane 1:**  
3µg ACE2

**Lane 2:**  
Protein Marker

**MW:** 86 kDa + glycans

**Purity:** ≥90%



OUR PRODUCTS ARE FOR RESEARCH USE ONLY. NOT FOR DIAGNOSTIC OR THERAPEUTIC USE.

To place your order, please contact us by Phone **1.858.202.1401** Fax **1.858.481.8694**

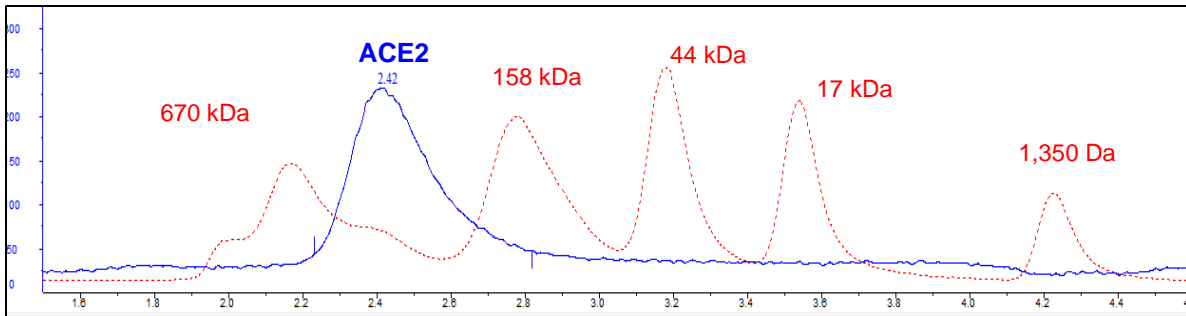
Or you can Email us at: [info@bpsbioscience.com](mailto:info@bpsbioscience.com)

Please visit our website at: [www.bpsbioscience.com](http://www.bpsbioscience.com)



6042 Cornerstone Court West, Suite B  
San Diego, CA 92121  
Tel: 1.858.202.1401  
Fax: 1.858.481.8694  
Email: [info@bpsbioscience.com](mailto:info@bpsbioscience.com)

**Gel Filtration Curve:**



<10% Aggregation

OUR PRODUCTS ARE FOR RESEARCH USE ONLY. NOT FOR DIAGNOSTIC OR THERAPEUTIC USE.

To place your order, please contact us by Phone **1.858.202.1401** Fax **1.858.481.8694**  
Or you can Email us at: [info@bpsbioscience.com](mailto:info@bpsbioscience.com)  
Please visit our website at: [www.bpsbioscience.com](http://www.bpsbioscience.com)