

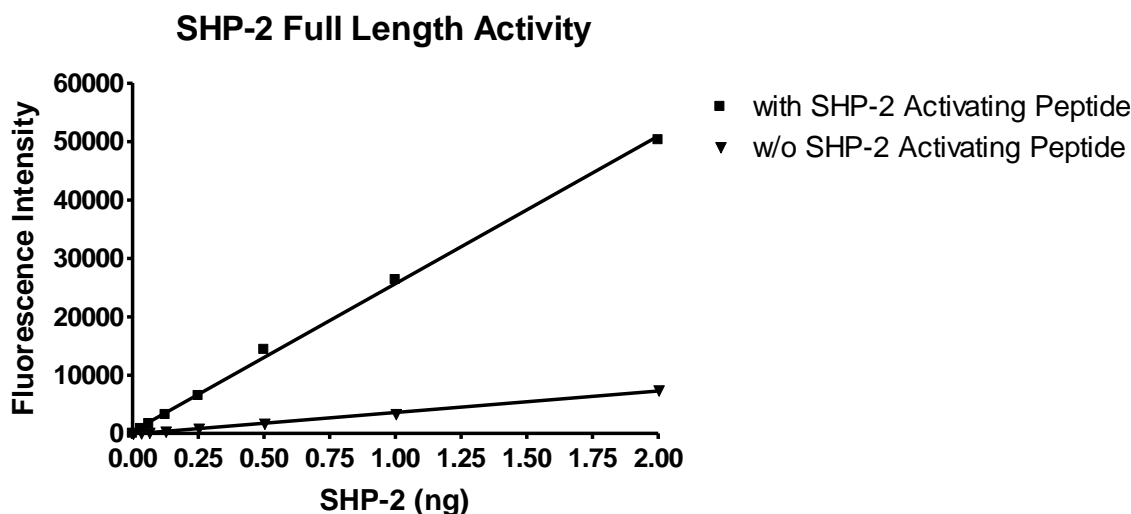
Data Sheet
SHP-2 Activating Peptide
(IRS1_pY1172(dPEG8)pY1222)
Catalog # 79319-1

Background: It has been shown that the bisphosphorylated insulin receptor substrate 1 (IRS-1) binds to the (N)-SH2 domain of SHP-2 (PTPN11) resulting in activation of the SHP2 enzymatic activity.

Description: IRS1_pY1172(dPEG8)pY1222(SEQ: *H2N-LN(pY)IDLDLV(dPEG8)LST(pY)-ASINFQK-amide*)

Purity: >95% (by HPLC)

Size: 25 µl



SHP2 activation assay was performed as described in the SHP2(Full length) Assay Kit (BPS cat#79330)

Solubility/Stability: Soluble in DMSO. Store at -80°C.

Reference: Chen Y-N et. al., *Nature*, 535(7610):148-152 (2016)

OUR PRODUCTS ARE FOR RESEARCH USE ONLY. NOT FOR DIAGNOSTIC OR THERAPEUTIC USE.

To place your order, please contact us by Phone **1.858.829.3082** Fax **1.858.481.8694**

Or you can Email us at: info@bpsbioscience.com

Please visit our website at: www.bpsbioscience.com



6042 Cornerstone Court W, Ste B
San Diego, CA 92121
Tel: 1.858.829.3082
Fax: 1.858.481.8694
Email: info@bpsbioscience.com

RELATED PRODUCTS:

<u>Product Name</u>	<u>Catalog #</u>	<u>Size</u>
SHP-2, His-Tag (Full Length)	79018	20 µg
SHP-2 (PTPN11), GST-tag	30022	20 µg
SHP-1(PTPN6), GST-tag	30021	20 µg
Insulin receptor (INSR), GST-tag	40241	10 µg
Homogeneous SHP-2 Assay Kit	79317	96 rxns

OUR PRODUCTS ARE FOR RESEARCH USE ONLY. NOT FOR DIAGNOSTIC OR THERAPEUTIC USE.

To place your order, please contact us by Phone **1.858.829.3082** Fax **1.858.481.8694**

Or you can Email us at: info@bpsbioscience.com

Please visit our website at: www.bpsbioscience.com