

Data Sheet

PP1A, Active

Human recombinant, with N-terminal GST-tag

Catalog #: 41106

Lot #: 141211

Conc.: 0.1 mg/ml

Formulated in: 50 mM Tris-HCl, pH 7.5, 150 mM NaCl, 10 mM glutathione, 0.1 mM EDTA, 0.1 mM PMSF, 0.25 mM DTT, 25% glycerol

Stability: At least 6 months at -80°C . Avoid freeze/thaw cycles. Storing diluted enzyme is not recommended, if necessary, use carrier protein (BSA 0.1 – 0.5%).

References:

1. Cohen, P. *et al.*, *J. Biol. Chem.* 1989; **264**: 21435-21438.
2. Genoux, D. *et al.*, *Nature.* 2002; **418**: 970-975.

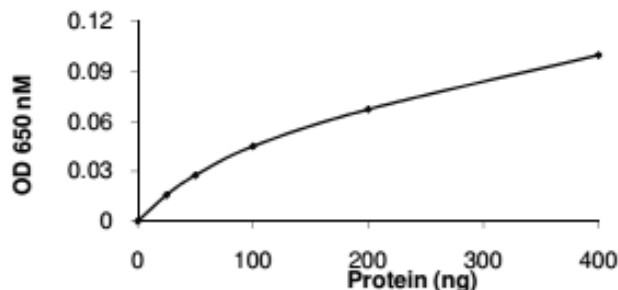
Description: Recombinant human serine/threonine-protein phosphatase PP1-alpha catalytic subunit (PP1A), also known as PPP1CA and PPP1A, GenBank Accession No. NM_002708, full-length with an N-terminal GST tag and expressed in a baculovirus-infected Sf9 insect cell expression system. MW = 62 kDa.

Specific Activity: 228 pmol/min/ μg .
 Assay conditions: Assay was done using BIOMOL GREEN Reagent. Briefly, 5 μl of varying amounts of PP1A was mixed with 10 μl of buffer containing 0.2% 2-mercaptoethanol and 65 ng/ μl BSA and 5 μl of 1 $\mu\text{g}/\mu\text{l}$ Thr-phosphopeptide synthetic substrate (KRT(p)IRR). Reaction was incubated at 37°C for 15 min. before adding 100 μl of BIOMOLE Green Reagent and incubating at room temp. for 30 min. Absorbance was read at 650 nm.

Application: Useful for studying enzyme kinetics, screening inhibitors, and selectivity profiling.

Quality Assurance

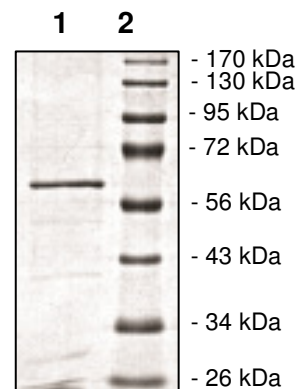
Specific Activity



10% SDS-PAGE
Coomassie staining

Lane 1: PP1A
Lane 2: Protein Marker

MW: 62 kDa
Purity: $\geq 75\%$



OUR PRODUCTS ARE FOR RESEARCH USE ONLY. NOT FOR DIAGNOSTIC OR THERAPEUTIC USE.

To place your order, please contact us by Phone **1.858.829.3082** Fax **1.858.481.8694**
 Or you can Email us at: info@bpsbioscience.com
 Please visit our website at: www.bpsbioscience.com