

Data Sheet

PDE10A (mouse)

Mouse, recombinant, N-terminal GST tag
Catalog#: 60101
Lot#: 130301-G Conc.: 0.82 mg/ml

Formulated in: 40 mM Tris-HCl, pH 8.0,
110 mM NaCl, 0.04% Tween-20, 20%
glycerol, and 3 mM DTT.

Stability: >6 months at -80°C. Avoid
multiple freeze/thaw cycles.

References:

1. Siuciak, J.A. *et al.*, *Neuropharmacology* **51** (2), 374-385 (2006).
2. Hu, H. *et al.*, *Eur. J. Neurosci.* **20** (12), 3351-3363 (2004).

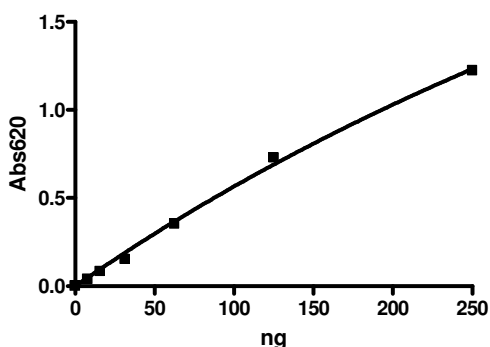
Description: Mouse PDE10A (GenBank Accession No. NM_011866), full length with N-terminal GST tag, MW=117 kDa, expressed in a Baculovirus infected Sf9 cell expression system.

Specific Activity: 1,029 pmol/min/μg. One unit is defined as the amount of enzyme that will convert 1 pmole of 3', 5'-cAMP to 5'-AMP per min at 37°C. Assay condition: 10 mM Tris-HCl, pH 7.4, 10 mM MgCl₂, 0.1 mg/ml BSA, 0.05% Tween-20, 200 μM cAMP, and serial dilutions of PDE at 37°C for 20 min. Quantified by 5' nucleotidase cleaving the 5'-AMP product and releasing the phosphate group which is detected by Malachite Green Reagent.

Application: Useful for the study of enzyme kinetics, screening inhibitors, and selectivity profiling.

Quality Assurance

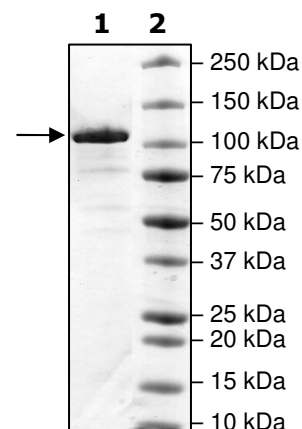
PDE10A mouse Specific Activity



4-20% SDS-PAGE Coomassie staining

Lane 1:
2 μg mPDE10A
(mouse)
Lane 2:
Protein Marker

MW: 117 kDa
Purity: ≥92%



OUR PRODUCTS ARE FOR RESEARCH USE ONLY. NOT FOR DIAGNOSTIC OR THERAPEUTIC USE.

To place your order, please contact us by Phone **1.858.829.3082** Fax **1.858.481.8694**

Or you can Email us at: info@bpsbioscience.com

Please visit our website at: www.bpsbioscience.com