

Data Sheet

PDE10A2

Human, recombinant, N-terminal GST-tag

Catalog #: 60100

Lot#: 140507-G1

Conc.: 0.07 mg/ml

Formulated in: 40 mM Tris-HCl, pH 8.0,
 110 mM NaCl, 2.2 mM KCl, 0.04% Tween,
 3 mM DTT, and 20% glycerol.

Stability: >6 months at -80°C. *Avoid freeze/thaw cycles. Storing diluted enzyme is not recommended, if necessary, use carrier protein (BSA 0.1 – 0.5%).*

References:

- Gross-Langenhoff, M., *et al.*, *J. Biol. Chem.* **281** (5), 2841-2846 (2006).
- Frame, M., *et al.*, *Cell. Signal.* **13** (10), 735-741 (2001).

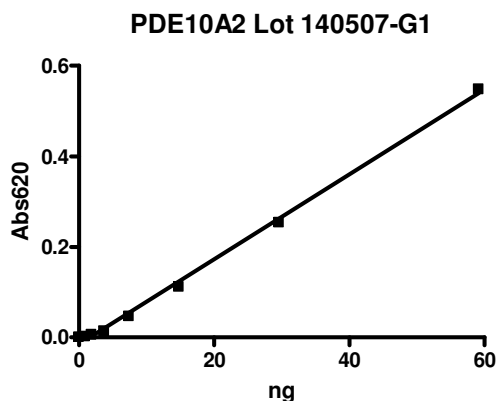
Description: Human PDE10A2 (GenBank Accession No. NM_006661), full length with N-terminal GST-tag, MW=116 kDa, expressed in Sf9 cells via a Baculovirus expression system.

Specific Activity: 1648 pmol/min/μg. One unit is defined as the amount of enzyme that will convert 1 pmole of 3', 5'-cAMP to 5'-AMP per min at 37°C. Assay condition: 10 mM Tris-HCl, pH 7.4, 10 mM MgCl₂, 0.1 mg/ml BSA, 0.05% Tween-20, 200 μM cAMP, and serial dilutions of PDE3A at 37°C for 20 min. Quantified by 5' nucleotidase cleaving the 5'-AMP product and releasing the phosphate group which is detected by Malachite Green Reagent.

Application: Useful for the study of enzyme kinetics, screening inhibitors, and selectivity profiling.

Quality Assurance

Specific Activity

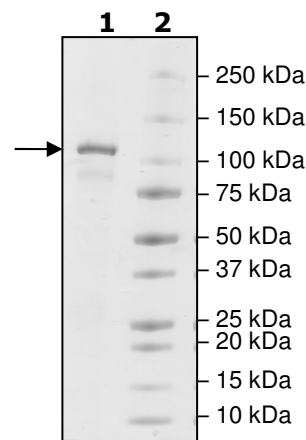


4-20% SDS-PAGE
Coomassie staining

Lane 1:
 2.2 μg PDE10A2

Lane 2:
 Protein Marker

MW: 118 kDa
Purity: ≥87%



OUR PRODUCTS ARE FOR RESEARCH USE ONLY. NOT FOR DIAGNOSTIC OR THERAPEUTIC USE.

To place your order, please contact us by Phone **1.858.829.3082** Fax **1.858.481.8694**

Or you can Email us at: info@bpsbioscience.com

Please visit our website at: www.bpsbioscience.com