

## Data Sheet

### PDE10A1

Human, recombinant, N-terminal GST-tag

**Catalog #:** 60099

Lot# 120412G1      Conc.: 0.09 mg/ml

**Formulated in:** 40 mM Tris-HCl, pH 8.0,  
 110 mM NaCl, 2.2 mM KCl, 3mM DTT, and  
 20% Glycerol.

**Stability:** >6 months at -80 °C

#### References:

1. Gross-Langenhoff, M., *et al.*, *J. Biol. Chem.* **281** (5), 2841-2846 (2006).
2. Frame, M., *et al.*, *Cell. Signal.* **13** (10), 735-741 (2001).

#### Description:

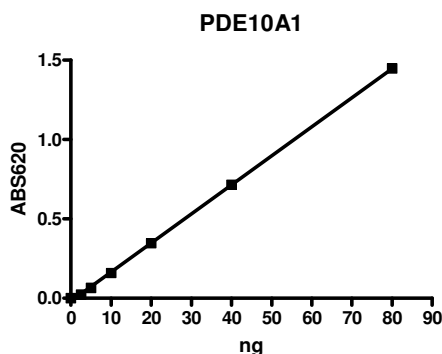
Human PDE10A1 (GenBank Accession No. NM\_001130690), a.a. 2-789(end) with N-terminal GST-tag, MW=116 kDa, expressed in Sf9 cells via a Baculovirus expression system.

**Specific Activity:** 3091 pmol/min/μg. One unit is defined as the amount of enzyme that will convert 1 pmole of 3',5'-cAMP to 5'-AMP per min at 37 °C. Assay condition: 10 mM Tris-HCl, pH 7.4, 10 mM MgCl<sub>2</sub>, 0.05% Tween-20, 200 μM cAMP, and 0.25-4 ng/μl PDE10A1 at 37 °C for 20 min. Quantified by 5'-nucleotidase cleaving the 5'-AMP product and releasing the phosphate group which is detected by Malachite Green Reagent.

#### Application:

Useful for the study of enzyme kinetics, screening inhibitors, and selectivity profiling.

## Quality Assurance



### 10% SDS-PAGE Coomassie staining

**Lane 1:**

2 μg PDE10A1

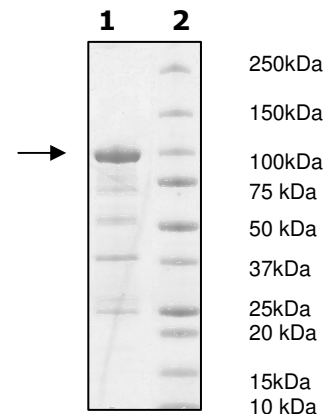
**Lane 2:**

Protein Marker

BioLabs (#P7708L)

**MW:** 116 kDa

**Purity:** ≥48%



OUR PRODUCTS ARE FOR RESEARCH USE ONLY. NOT FOR DIAGNOSTIC OR THERAPEUTIC USE.

To place your order, please contact us by Phone **1.858.829.3082** Fax **1.858.481.8694**

Or you can Email us at: [info@bpsbioscience.com](mailto:info@bpsbioscience.com)

Please visit our website at: [www.bpsbioscience.com](http://www.bpsbioscience.com)