

Data Sheet

PDE7A, GST-Tag

Human, Recombinant, N-terminal GST-tag

Catalog #: 60070

Lot #: 190729-2 **Conc.:** 0.36 mg/ml

Formulated in: 40 mM Tris-HCl, pH 8.0, 122 mM NaCl, 2.2 mM KCl, 0.04% Tween 20, 3 mM DTT, 20% Glycerol.

Stability: At least 6 months at -80°C .
 Avoid freeze/thaw cycles.

References:

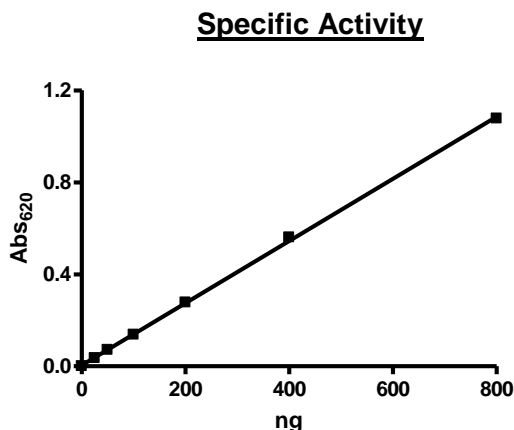
1. Wang, H., *et al.*, *J. Biol. Chem.* **280** (35), 30949-30955 (2005)
2. Torras-Llort, M. and Azorin, F., *Biochem. J.* **373** (PT 3), 835-843 (2003)

Description: Human PDE7A, isoform a, GenBank Accession No. NM_002603, a.a. 122-end with N-terminal GST-tag, expressed in a Baculovirus-infected Sf9 cell expression system. MW=66 kDa.

Specific Activity: ≥ 200 pmol/min/ μg .
 Assay conditions: One unit is defined as the amount of enzyme that will convert 1 pmole of 3', 5'-cAMP to 5'-AMP per min at 37°C .
 Assay condition: 10 mM Tris-HCl, pH 7.4, 10 mM MgCl₂, 0.1 mg/ml BSA, 0.05% Tween-20, 200 μM cAMP, and serial dilutions of PDE7A1 at 37°C for 20 min. Quantified by 5' nucleotidase cleaving the 5'-AMP product and releasing the phosphate group which is detected by Malachite Green Reagent.

Application: Useful for the study of enzyme kinetics, screening inhibitors, and selectivity profiling.

Quality Assurance

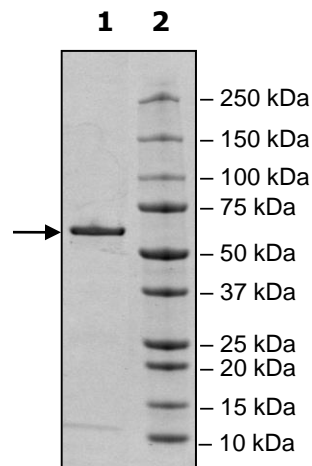


**4-20% SDS-PAGE
 Coomassie staining**

Lane 1:
 2 μg PDE7A
Lane 2:
 Protein Marker

MW: 66 kDa

Purity: $\geq 90\%$



OUR PRODUCTS ARE FOR RESEARCH USE ONLY. NOT FOR DIAGNOSTIC OR THERAPEUTIC USE.

To place your order, please contact us by Phone **1.858.202.1401** Fax **1.858.481.8694**
 Or you can Email us at: info@bpsbioscience.com
 Please visit our website at: www.bpsbioscience.com