

## Data Sheet

### PDE4C1, GST-tag

Human, recombinant, N-terminal GST tag

**Catalog #:** 60044

**Lot #:** 150923 **Conc.:** 0.55 mg/ml

**Formulated in:** 40 mM Tris-HCl, pH 8.0, 110 mM NaCl, 2.2 mM KCl, 3 mM DTT, 20% glycerol and 9 mM glutathione

**Stability:** At least 6 months at  $-80^{\circ}\text{C}$ . *Avoid freeze/thaw cycles. Storing diluted enzyme is not recommended, if necessary, use carrier protein (BSA 0.1 – 0.5%).*

**References:**

1. Wang H. *et al.*, *Biochem J.* 2007; **408**(2):193-201.
2. Sullivan M., *et al.*, *Cell. Signal.* 1999; **11** (10):735-742.

**Description:**

Human PDE4C1 (GenBank Accession No. NM\_000923), full length, with N-terminal GST tag, MW=106 kDa, expressed in a baculovirus-infected Sf9 cell expression system.

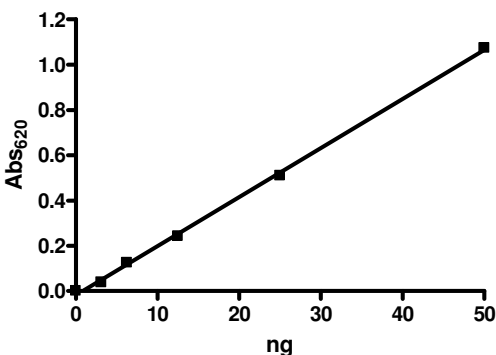
**Specific Activity:**  $\geq 3,000$  pmole/min/ $\mu\text{g}$ . One unit is defined as the amount of enzyme that will convert 1 pmole of 3', 5'-cAMP to 5'-AMP per min at  $37^{\circ}\text{C}$ . Assay condition: 10 mM Tris-HCl, pH 7.4, 10 mM  $\text{MgCl}_2$ , 1 mM  $\text{MnCl}_2$ , 200  $\mu\text{M}$  cAMP, 2.5 kU 5'-nucleotidase and PDE4C1 at  $37^{\circ}\text{C}$  for 20 min. Quantified by 5'-nucleotidase cleaving the 5'-AMP product and releasing the phosphate group which is detected by Malachite Green Reagent.

**Application:**

Useful for the study of enzyme kinetics, screening inhibitors, and selectivity profiling.

## Quality Assurance

**Specific Activity**



**4-20% SDS-PAGE**  
**Coomassie staining**

**Lane 1:**

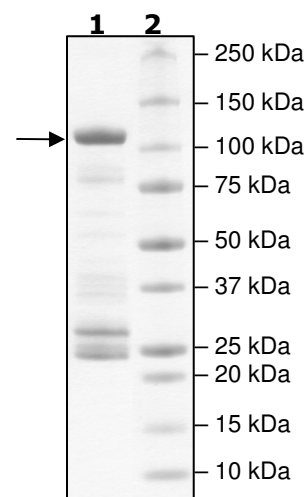
2  $\mu\text{g}$  PDE4C1

**Lane 2:**

Protein Marker

**MW:** 106 kDa

**Purity:**  $\geq 41\%$



OUR PRODUCTS ARE FOR RESEARCH USE ONLY. NOT FOR DIAGNOSTIC OR THERAPEUTIC USE.

To place your order, please contact us by Phone **1.858.829.3082** Fax **1.858.481.8694**

Or you can Email us at: [info@bpsbioscience.com](mailto:info@bpsbioscience.com)

Please visit our website at: [www.bpsbioscience.com](http://www.bpsbioscience.com)