

Data Sheet

PDE4B2

Human, recombinant, N-terminal GST tag,
 C-terminal His tag

Catalog #: 60042

Lot#: 121218-G1 **Conc.:** 0.52 mg/ml

Formulated in: 40 mM Tris-HCl, pH 8.0,
 110 mM NaCl, 2.2 mM KCl, 0.04% Tween
 20, and 20% glycerol.

Stability: >6 months at -80°C

References:

1. Arp, J., *et al.*, *Mol Cell Biol.* 2003 Nov;
23(22):8042-57.
2. Wang, P., *et al.*, *Mol Pharmacol.* 1999
 Jul; **56(1):**170-4.

Description: Human PDE4B2 (GenBank
 Accession No. NM_001037339), full
 length, with N-terminal GST tag and C-
 terminal His tag, MW=91.2 kDa, expressed
 in a Baculovirus infected Sf9 cell
 expression system.

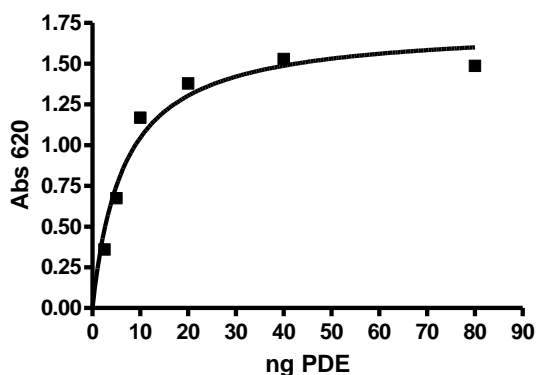
Specific Activity: 12,300 pmol/min/μg.

One unit is defined as the amount of
 enzyme that will convert 1 pmole of 3', 5'-
 cAMP to 5'-AMP per min at 37°C. Assay
 condition: 10 mM Tris-HCl, pH 7.4, 10 mM
 MgCl₂, 0.1 mg/ml BSA, 0.05% Tween-20,
 200 μM cAMP, and serial dilutions of PDE
 at 37°C for 20 min. Quantified by 5'
 nucleotidase cleaving the 5'-AMP product
 and releasing the phosphate group which
 is detected by Malachite Green Reagent.

Application: Useful for the study of
 enzyme kinetics, screening inhibitors, and
 selectivity profiling.

Quality Assurance

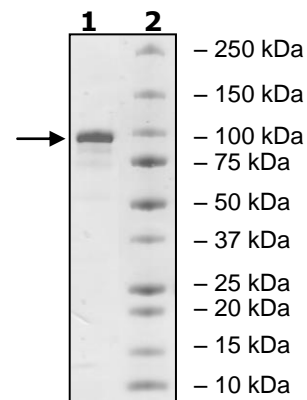
Specific Activity



10% SDS-PAGE
Coomassie staining

Lane 1:
 2.5 μg PDE4B2
Lane 2:
 Protein Marker

MW: 91.2 kDa
Purity: ≥82%



OUR PRODUCTS ARE FOR RESEARCH USE ONLY. NOT FOR DIAGNOSTIC OR THERAPEUTIC USE.

To place your order, please contact us by Phone **1.858.829.3082** Fax **1.858.481.8694**
 Or you can Email us at: info@bpsbioscience.com
 Please visit our website at: www.bpsbioscience.com