

Data Sheet

PDE2A (Rat)

Rat, recombinant, N-terminal His-GST tag

Catalog #: 60022

Lot #: 140523-G1

Conc.: 0.71 mg/ml

Fomulated in: 40 mM Tris-HCl, pH 8.0, 110 mM NaCl, 2.2 mM KCl, 0.04% Tween-20, 20% Glycerol, and 3 mM DTT.

Stability: >6 months at -80°C . Avoid freeze/thaw cycles. Storing diluted enzyme is not recommended, if necessary, use carrier protein (BSA 0.1 – 0.5%).

References:

1. Seybold, J., *et al.*, *Blood* **105** (9), 3569-3576 (2005).
2. Martinez, S.E., *et al.*, *Proc. Natl. Acad. Sci. U.S.A.* **99** (20), 13260-13265

Description:

Rat PDE2A (GenBank Accession No. NM_00143847), full length, with N-terminal His-GST tag, MW=133 kDa, expressed in a Baculovirus infected Sf9 cell expression system.

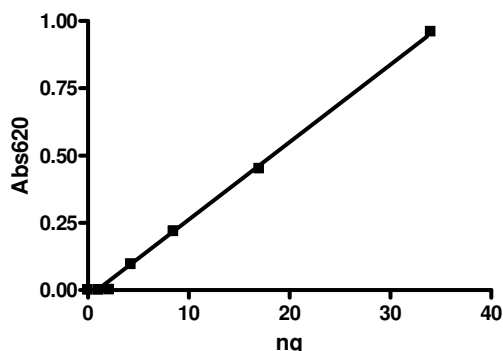
Specific Activity: 5000 pmol/min/ μg . One unit is defined as the amount of enzyme that will convert 1 pmole of 3', 5'-cAMP to 5'-AMP per min at 37°C . Assay condition: 10 mM Tris-HCl, pH 7.4, 10 mM MgCl_2 , 0.1 mg/ml BSA, 0.05% Tween-20, 200 μM cAMP, and 0.6 ng/ μl PDE2A1 at 37°C for 20 min. Quantified by 5' nucleotidase cleaving the 5'-AMP product and releasing the phosphate group which is detected by Malachite Green Reagent.

Application:

Useful for the study of enzyme kinetics, screening inhibitors, and selectivity profiling.

Quality Assurance

PDE2A Specific Activity

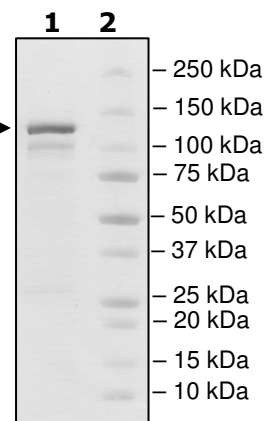


10% SDS-PAGE
Coomassie staining

Lane 1:
2.5 μg PDE2A

Lane 2:
Protein Marker
BioLabs (#P7708L)

MW: 133 kDa
Purity: $\geq 75\%$



OUR PRODUCTS ARE FOR RESEARCH USE ONLY. NOT FOR DIAGNOSTIC OR THERAPEUT

To place your order, please contact us by Phone **1.858.829.3082** Fax **1.858.481.8694**
 Or you can Email us at: info@bpsbioscience.com
 Please visit our website at: www.bpsbioscience.com



6044 Cornerstone Court West, Suite E
San Diego, CA 92121
Tel: 1.858.829.3082
Fax: 1.858.481.8694
Email: info@bpsbioscience.com

Sequence

MHHHHHHGGGSPILGYWKIKGLVQPTRLLEYLEEKYEEHLYERDEGDKWRNKKFELG
LEFPNLPYYIDGDVKLTSMAIIRYIADKHNMLGGCPKERAEISMLEGAVLDIRYGVSRIA
YSKDFETLKVDFLSKLPEMLKMFEDRLCHKTYLNGDHVTHPDFMLYDALDVVLYMDPM
CLDAFPKLVCFKKRIEAIPQIDKYLKSSKYIAWPLQGQWQATFGGGDHPKSDPLVPRGS
PGEFGQACGHSILCRSQQYPAARPAEPRGQQVFLKPDEPPPQPCADSLQDALLSLG
AVIDIAGLRQAAKDALSAVLPKVETVYTYLVDGESRLVCEDPPHELPQEGKIREAVISR
KRLSCDGLGPSDLLGKPLARLVAPLAPDTQVLVIPLLDKETGTVAAVILVHCGQLSDS
EEQSLQVVEKHALVALQRVQALQRRRPEAVQNTSADPSEDQKDEKGYTAHDRKILQ
LCGELYDLDATSLQLKVLRYLQQETQATHCCLLLVSEDNLQLSCKVIGEKVLGEEVSF
PLTMGRLGQVVEDKQCIQLKDLTSDDVQQLQNLGCELRAMLCVPVISRATDQVVAL
ACAFNKLGGDFFTDEDERAIQHCFHYTGTVLTSTLAFQKEQKLKCECQALLQVAKNL
FTHLDDVSVLLQEITEARNLSNAEICSVFLLDQNELVAKVFDGGVVDDESYEIRIPADQ
GIAGHVATTGQILNIPDAYAHPLFYRGVDDSTGFRTRNILCFPIKNENQEVIGVAELVNK
INGPWFSKFDEDLATAFSIYCGISIAHSLLYKKVNEAQYRSHLANEMMMYHMKVSDDE
YTKLLHDGIQPVA/AIDSNFANFTYTPRSLPEDDTSMILSMLQDMNFINNYKIDCPTLA
RFCLMVKKGYRDPYHNWMHAFSVSHFCYLLYKNLELSNYLEDIEIFALFISCMCHDL
DHRGTNNSFQVASKSVLAALYSSEGSVMERHHFAQAIAILNTHGCNIFDHFSRKDYQR
MLDLMRDIILATDLAHLRIFKDLQKMAEVGYDRNNKQHHRLLLCLLMTSCDLSDQTK
GWKTTRKIAELIYKEFFSQGDLEKAMGNRPMEMMDREKAYIPELQISFMEHIAMPIYK
LLQDLFPKAAELYERVASNREHWTKVSHKFTIRGLPSNNSLDFLDEEYEVDPDLVTRA
PVNGCCSLEG

Red: His-GST tag

Blue: Linker including Thrombin Cleavage Site

Black: rat PDE2A (a.a. 2-935(end))

OUR PRODUCTS ARE FOR RESEARCH USE ONLY. NOT FOR DIAGNOSTIC OR THERAPEUTIC USE.

To place your order, please contact us by Phone **1.858.829.3082** Fax **1.858.481.8694**

Or you can Email us at: info@bpsbioscience.com

Please visit our website at: www.bpsbioscience.com