

Data Sheet

PDE1B, GST-Tag (Mouse)

Mouse, recombinant, N-terminal GST tag

Catalog #: 11665

Lot #: 181119-G **Conc.:** 0.34 mg/ml

Formulated in: 40 mM Tris-HCl, pH 8.0, 110 mM NaCl, 2.2 mM KCl, 0.04% Tween20, 20% glycerol.

Stability: At least 6 months at -80°C . Avoid freeze/thaw cycles. Storing diluted enzyme is not recommended, if necessary, use carrier protein (BSA 0.1 – 0.5%).

References:

1. Spence, S., *Biomedical Journal*, **321(1)**, 157-163 (1997).
2. Xin, J. *et al.*, *Proc. Natl. Acad. Sci. U.S.A.* **93**: 11236-11241 (1996).

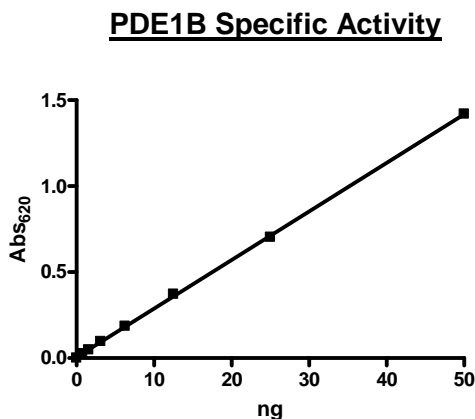
Description: Mouse PDE1B (GenBank Accession No. NM_008800), a.a. 42-535 (end), with N-terminal GST-tag, MW= 83 kDa, expressed in a Baculovirus infected Sf9 cell expression system.

Specific Activity: 5000 pmol/min/μg. One unit is defined as the amount of enzyme that will convert 1 pmole of 3', 5'-cAMP to 5'-AMP per min at 37°C.

Assay condition: 10 mM Tris-HCl, pH 7.4, 10 mM MgCl₂, 0.1 mg/ml BSA, 0.05% Tween-20, 200 μM cAMP, and serial dilutions of PDE1B Mouse at 37°C for 20 min. Quantified by 5' nucleotidase cleaving the 5'-AMP product and releasing the phosphate group which is detected by Malachite Green Reagent.

Application: Useful for the study of enzyme kinetics, screening inhibitors, and selectivity profiling.

Quality Assurance



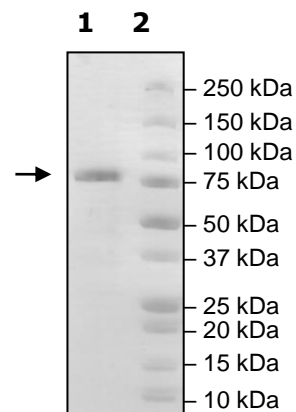
**4-20% SDS-PAGE
Coomassie staining**

Lane 1:
Mouse PDE1B

Lane 2:
Protein Marker

Purity: >90%

MW:
83 kD



OUR PRODUCTS ARE FOR RESEARCH USE ONLY. NOT FOR DIAGNOSTIC OR THERAPEUTIC USE.

To place your order, please contact us by Phone **1.858.202.1401** Fax **1.858.481.8694**
 Or you can Email us at: info@bpsbioscience.com
 Please visit our website at: www.bpsbioscience.com