

## Data Sheet

### DEP-1, GST-tag

Human, recombinant, N-terminal GST-tag

**Catalog #:** 30050

**Lot #:** 150226

**Conc.:** 0.29 mg/ml

**Formulated in:** 25 mM Tris-HCl pH 8.0, 0.69 mM NaCl, 1.4 mM KCl, 0.03% Tween 20, 1 mM DTT, 2 mM EDTA, 10 mM glutathione, and 50% glycerol.

**Stability:** At least 6 months at  $-80^{\circ}\text{C}$ . *Avoid freeze/thaw cycles. Storing diluted enzyme is not recommended, if necessary, use carrier protein (BSA 0.1 – 0.5%).*

#### References:

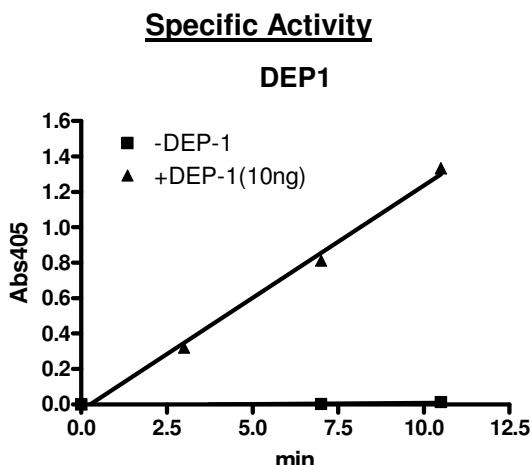
1. A. Massa, *et al.*, *J Biol Chem.* 2004, **279**: 29004-12.
2. S. Kellie, *et al.*, *J Cell Sci.* 2004, **117**: 609-18.

**Description:** Human DEP-1 protein tyrosine phosphatase (density-enhanced phosphatase-1, PTP-eta, CD148) catalytic domain, (a.a. 1024-1306) with N-terminal GST tag, MW=58.9 kDa, expressed in an *E. coli* expression system.

**Specific Activity:** 268 nmole/min/ $\mu\text{g}$   
 Assay conditions: 20 mM HEPES, pH 7.2, 100 mM NaCl, 2 mM EDTA, 1 mM DTT, 50 mM pNPP and DEP1. Assay was done at  $30^{\circ}\text{C}$  for 10 min, and the reaction was monitored at 405 nm continuously. Specific activity was calculated based on  $\epsilon_{\text{pNP}^{-}} = 18,000 \text{ M}^{-1}\text{cm}^{-1}$

**Application:** Useful for the study of enzyme kinetics, regulation, and to dephosphorylate target substrates.

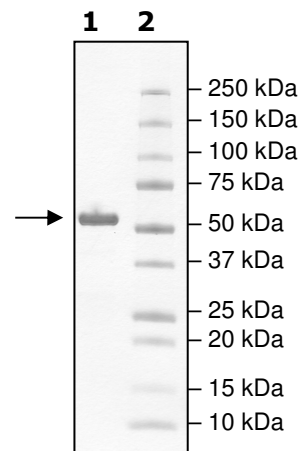
## Quality Assurance



### 4-20% SDS-PAGE Coomassie staining

**Lane 1:**  
2  $\mu\text{g}$  DEP1  
**Lane 2:**  
Protein Marker

**MW:** 59.6 kDa  
**Purity:**  $\geq 90\%$



OUR PRODUCTS ARE FOR RESEARCH USE ONLY. NOT FOR DIAGNOSTIC OR THERAPEUTIC USE.

To place your order, please contact us by Phone **1.858.829.3082** Fax **1.858.481.8694**

Or you can Email us at: [info@bpsbioscience.com](mailto:info@bpsbioscience.com)

Please visit our website at: [www.bpsbioscience.com](http://www.bpsbioscience.com)