

Data Sheet

PTP1B

Human, recombinant, N-terminal GST tag

Catalog #: 30010

Lot#: 131203 **Conc.:** 0.84 mg/ml

Formulated in: 25 mM Tris-HCl, pH 8.0, 75 mM NaCl, pH 8.0, 0.05% Tween-20, 10 mM glutathione, 1 mM DTT and 50% glycerol.

Stability: >6 months at -80°C . Avoid freeze/thaw cycles.

References:

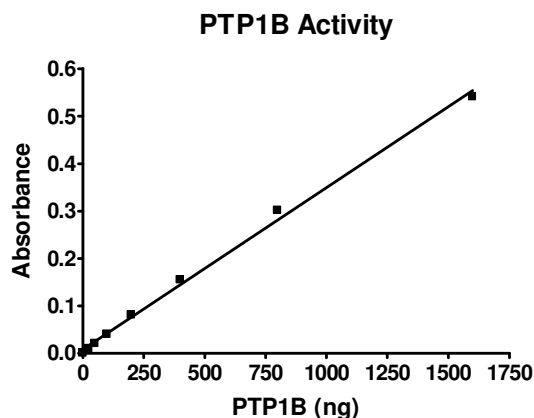
1. Frangioni *et al.*, *Cell*, 1992, **68**: 545
2. Elchebly, M. *et al.*, *Science* 1999, **283**:1544.

Description: PTP1B Protein tyrosine phosphatase, also known as PTPN1, catalytic domain (a.a. 1-321), Genbank accession number M31724, with N-terminal GST tag, MW=63.3 kDa, expressed in *E. coli*.

Specific Activity: 742 pmole/min/ μg
Assay Conditions: Enzyme reaction (50 μl) containing 20 mM HEPES, pH 7.2, 100 mM NaCl, 2 mM EDTA, 1 mM DTT, 1 mM pNPP and PTPase was monitored at 405 nm continuously. Specific activity was calculated based on $\epsilon_{\text{pNPP}^-} = 18,000 \text{ M}^{-1}\text{cm}^{-1}$.

Application: Useful for the study of enzyme kinetics, regulation, to dephosphorylate target substrates and for screening inhibitors.

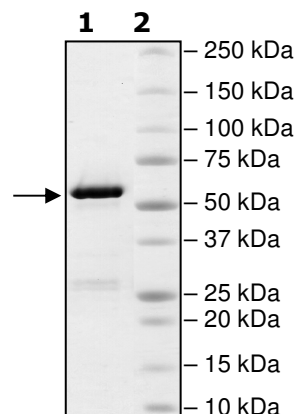
Quality Assurance



**4-20% SDS-PAGE
Coomassie staining**

Lane 1:
2 μg PTP1B
Lane 2:
Protein Marker

MW: 63.3 kDa
Purity: $\geq 90\%$



OUR PRODUCTS ARE FOR RESEARCH USE ONLY. NOT FOR DIAGNOSTIC OR THERAPEUTIC USE.

To place your order, please contact us by Phone **1.858.829.3082** Fax **1.858.481.8694**

Or you can Email us at: info@bpsbioscience.com

Please visit our website at: www.bpsbioscience.com