

Data Sheet

PTP1B

Human, recombinant, N-terminal GST tag

Catalog #: 30009

Lot #: 120322 **Conc.** 1.65 mg/ml

Formulated in: 45 mM Tris-HCl, pH 8.0,
124 mM NaCl, 2.4 mM KCl, 10% glycerol,
18 mM Glutathione, and 3 mM DTT.

Stability:

>6 months at -80 °C

References:

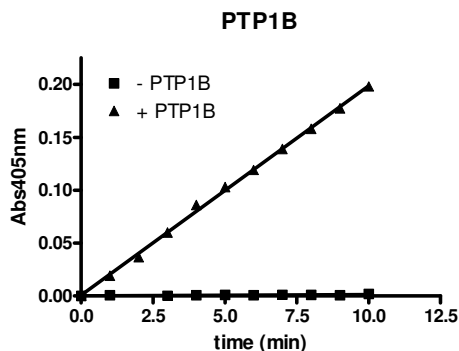
1. Frangioni *et al.*, *Cell*, 1992, **68**: 545
2. M. Elchebly *et al.*, *Science* 1999, **283**: 1544

Description: Protein tyrosine phosphatase, full length, (a.a. 1-436), (Genbank accession number M31724) with N-terminal GST-tag, MW=76 kDa, expressed in *E. coli*.

Specific Activity: 2,000 pmole/min/μg. One unit will hydrolyze 1 nmol p-nitrophenyl phosphate per minute at pH 7.4 and 30°C. Assay conditions: Enzyme reaction (50 μl) containing 20 mM HEPES, pH 7.2, 100 mM NaCl, 2 mM EDTA, 1 mM DTT, 1 mM pNPP and PTPase was monitored at 405 nm continuously. Specific activity was calculated based on $\epsilon_{\text{pNPP}} = 18,000 \text{ M}^{-1}\text{cm}^{-1}$.

Application: Useful for the study of enzyme kinetics, regulation, to dephosphorylate target substrates and for screening inhibitors.

Quality Assurance

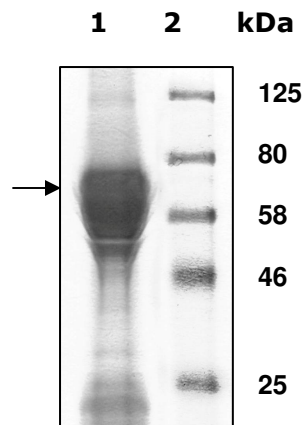


10% SDS-PAGE
Coomassie staining

Lane 1:
30 μg PTP1B

Lane 2:
Protein Marker
BioLabs (#P7708L)

MW: 76 kDa.
Purity: ≥55%



OUR PRODUCTS ARE FOR RESEARCH USE ONLY. NOT FOR DIAGNOSTIC OR THERAPEUTIC USE.

To place your order, please contact us by Phone **1.858.202.1401** or **1.858.481.8694**, Fax **1.858.259.5734**

Or you can Email us at: info@bpsbioscience.com
Please visit our website at: www.bpsbioscience.com