

## Data Sheet

### DNA Polymerase $\gamma$

Human, recombinant, N-terminal His-tag,  
N-terminal FLAG-tag  
Catalog #: 21001  
Lot #: 150306                      Conc.: 0.09 mg/ml

**Formulated in:** 40 mM Tris-HCl, pH 8.0, 110 mM NaCl, 2.2 mM KCl, 80  $\mu$ g/ml FLAG peptide, 0.04% Tween-20, and 20% glycerol.

**Stability:** >6 months at -80°C. Avoid freeze/thaw cycles.

**References:**

1. Ropp, P.A., and Copeland, W.C., *Genomics* 1996;**36(3)**:449-458
2. Lestienne, P., *Biochem. Biophys. Res. Comm.* 1987;**146(3)**: 1146-1153

**Description:**

Human DNA polymerase  $\gamma$  (gamma), also known as Pol gamma and POLG (GenBank Accession No. NM\_002693), amino-acids 2-1239 (end), with N-terminal His-tag and N-terminal FLAG-tag, MW=141 kDa, expressed in a baculovirus infected Sf9 cell expression system.

**Application:**

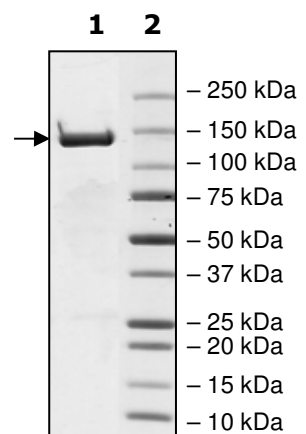
Useful for DNA synthesis and DNA repair, as an antigen for Western blotting, and for inhibitor screening.

### Quality Assurance

**4-20% SDS-PAGE  
Coomassie staining**

**Lane 1:**  
1.3  $\mu$ g POLG  
**Lane 2:**  
Protein Marker

**Purity:**  $\geq$ 78%  
**MW:** 141 kDa



OUR PRODUCTS ARE FOR RESEARCH USE ONLY. NOT FOR DIAGNOSTIC OR THERAPEUTIC USE.

To place your order, please contact us by Phone **1.858.829.3082** Fax **1.858.481.8694**  
Or you can Email us at: [info@bpsbioscience.com](mailto:info@bpsbioscience.com)  
Please visit our website at: [www.bpsbioscience.com](http://www.bpsbioscience.com)



6044 Cornerstone Court West, Suite E  
San Diego, CA 92121  
Tel: 1.858.829.3082  
Fax: 1.858.481.8694  
Email: [info@bpsbioscience.com](mailto:info@bpsbioscience.com)

**Sequence:**

**MHHHHHHHDYKDDDDK**SRLLWRKVAGATVGGPVPAPGRWVSSVSPASDPSDGQRR  
RQQQQQQQQQQQQQQPQQPQVLSSEGGQLRHNPLDIQMLSRGLHEQIFGQGGEMP  
GEAAVRRSVEHLQKHGLWGQPAVPLPDVELRPLPLYGDNLQHFRLLAQKQSLPYL  
EAANLLLQAQLPPKPPAWAWAEGWTRYGPEGEAVPVAIPEERALVFDVEVCLAEGT  
CPTLAVAISPSAWYSWCSQRLVEERYSWTSQLSPADLIPLEVPTGASSPTQRDWQEQ  
LVVGHNVSFDRAHIREQYLIQGSRMFLDTMSMHMAISGLSSFQRSLWIAAKQGKHK  
VQPPTKQGQKSQRKARRGPAISSWDWLDISSVNSLAEVHRLYVGGPPLEKEPRELFV  
KGTMKDIRENFQDLMQYCAQDVWATHEVFQQQLPLFLERCPHPVTLAGMLEMGVSY  
LPVNQNWERYLAEAQGTYEELQREMKKSLMDLANDACQLLSGERYKEDPWLWDLE  
WDLQEFKQKAKKVKEPATASKLPIEGAGAPGDPMDQEDLGPCSEEEEFQQDVM  
ARACLQKLKGTTELLPKRPQHLPGHPGWYRKLCPRLDPAWTPGPSLLSLQMRVTP  
KLMALTWDGFPLHYSERHGWGYLVPGRRDNLAKLPTGTTLESAGVVCYRAIESLYR  
KHCLEQGKQQLMPQEAGLAEFFLLTDNSAIWQTVEELDYLEVEAEAKMENLRAAVP  
GQPLALTARGGPKDTQPSYHHGNGPYNDVDIPGCWFFKLPKDKGNSCNVGSPPFAKD  
FLPKMEDGTLQAGPGGASGPRALEINKMISFWRNAHKRISSQMVVWLPRSAIPRAVI  
RHPDYDEEGLYGAILPQVVTAGTITRAVEPTWLTASNARPDVRSSELKAMVQAPPG  
YTLVGADVDSQELWIAAVLGDAHFAGMHGCTAFGWMTLQGRKSRGTDLHSKTATTV  
GISREHAKIFNYGRIYGAGQPFAERLLMQFNHRLTQQEAAEKAQQMYAATKGLRWY  
RLSDEGEWLVRELNLPVDRTEGGWISLQDLRKVQRETARKSQWKKWEVVAERAWK  
GGTESEMFNKLESIATSDIPRTPVLGCCISRALEPSAVQEEFMTSRVNWVQSSAVDY  
LHLMLVAMKWLFEFAIDGRFCISIHDEVRYLVREEDRYRAALALQITNLLTRCMFAYK  
LGLNDLPQSVAFFSAVDIDRCLRKEVTMDCKTPSNPTGMERRYGIPQGEALDIYQIIE  
TKGSLEKRSQPGP

OUR PRODUCTS ARE FOR RESEARCH USE ONLY. NOT FOR DIAGNOSTIC OR THERAPEUTIC USE.

To place your order, please contact us by Phone **1.858.829.3082** Fax **1.858.481.8694**  
Or you can Email us at: [info@bpsbioscience.com](mailto:info@bpsbioscience.com)  
Please visit our website at: [www.bpsbioscience.com](http://www.bpsbioscience.com)