

Data Sheet

Calmodulin

Human, recombinant, N-terminal His -tag

Catalog#: 81152

Lot#: 140919

Conc.: 0.2 mg/ml

Formulated in: 50 mM sodium phosphate, pH 7.0, 300 mM NaCl, 150 mM imidazole, 0.1 mM PMSF, 0.25 mM DTT, 25% glycerol.

Stability: >6 months at -80°C . Avoid freeze/thaw cycles. Storing diluted protein is not recommended, if necessary, use carrier protein (BSA 0.1 – 0.5%).

References:

1. Li, H. *et al.*, *FEBS Lett.* 2004; **13(559)**: 175-180.
2. Huang, M. *et al.*, *Cell Stress Chaperones.* 2009; **14(4)**: 343-353.

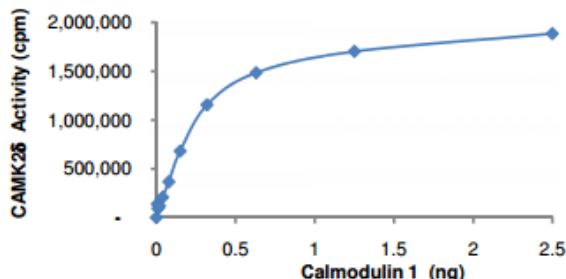
Description: Human Calmodulin 1, also known as CALM1, CALML2, CAMI, DD132, PHKD, GenBank Accession No. NM_006888, full-length with an N-terminal His-tag, expressed in an *E. coli* cell expression system. MW = 17 kDa.

Assay Conditions: Varying amounts of calmodulin 25 ng CAMK2 δ , 200 ng/ μl autocamtide-2 peptide, 0.4 mM CaCl_2 , 50 μM ATP and trace [^{33}P]- γ -ATP in 25 μl of reaction volume for 15 min at 30°C .

Application: Useful for studying calmodulin-dependent kinase kinetics *in vitro*.

Quality Assurance

Specific Activity

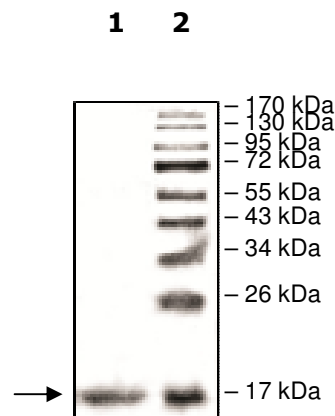


**4-20% SDS-PAGE
Coomassie staining**

Lane 1:
Calmodulin 1

Lane 2:
Protein Marker

MW: 17 kDa
Purity: $\geq 90\%$



OUR PRODUCTS ARE FOR RESEARCH USE ONLY. NOT FOR DIAGNOSTIC OR THERAPEUTIC USE.

To place your order, please contact us by Phone **1.858.829.3082** Fax **1.858.481.8694**
 Or you can Email us at: info@bpsbioscience.com
 Please visit our website at: www.bpsbioscience.com