

## Data Sheet

### KEAP1, His-tag

Human, recombinant, N-terminal His-tag

**Catalog #:** 70040

**Lot#:** 160408

**Conc.:** 7.84 mg/ml

**Formulated in:** 40 mM Tris-HCl pH 8.0, 110 mM NaCl, 2.2 mM KCl, 3 mM DTT and 20% glycerol

**Stability:** At least 6 months at  $-80^{\circ}\text{C}$ . Avoid freeze/thaw cycles. Storing diluted protein is not recommended, if necessary, include carrier protein (BSA 0.1 – 0.5%).

**References:**

1. Dinkova-Kostova, A.T., *et al.*, 2002. *Proc. Nat. Acad. Sci. (USA)*. **99(18)**: 11908-11913.
2. Inoyama, D., *et al.* 2012. *J. Biomol. Screening* **17(4)**: 435-447.

**Description:**

Human Keap1, also known as Kelch-like ECH-associated protein, INRF2, KIAA0132, and KLHL19, GenBank Accession No. NM\_203500, a.a. 321-609 expressed in an *E. coli* cell expression system. MW = 33 kDa

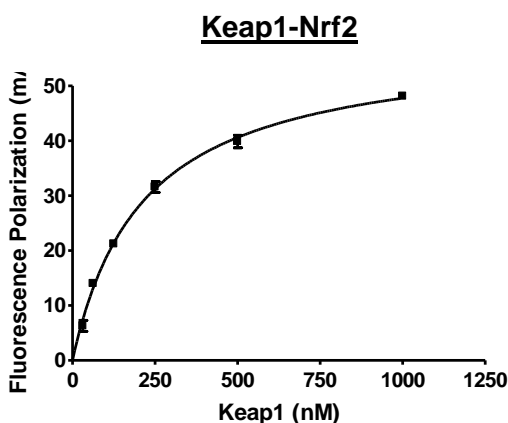
**Assay Conditions:**

10 mM Tris-HCl, pH 7.4, 150mM NaCl, 50mM EDTA, 0.05% Tween 20, 0.1mg/ml BSA and 5nM Nrf2 probe. Incubate for 30 minutes at room temperature. Fluorescence intensity is measured at exc485/em528.

**Application:**

Useful for studying protein binding and screening small molecules.

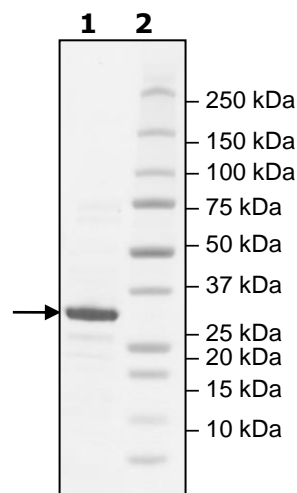
### Quality Assurance



**4-20% SDS-PAGE  
Coomassie staining**

**Lane 1:**  
2  $\mu\text{g}$  KEAP1  
**Lane 2:**  
Protein Marker

**MW:** 33 kDa  
**Purity:**  $\geq 80\%$



OUR PRODUCTS ARE FOR RESEARCH USE ONLY. NOT FOR DIAGNOSTIC OR THERAPEUTIC USE.

To place your order, please contact us by Phone **1.858.829.3082** Fax **1.858.481.8694**  
 Or you can Email us at: [info@bpsbioscience.com](mailto:info@bpsbioscience.com)  
 Please visit our website at: [www.bpsbioscience.com](http://www.bpsbioscience.com)