

## Data Sheet

### HSP90 $\beta$ , His-Tag

Human, recombinant, C-terminal His-tag  
**Catalog #:** 50292  
**Lot#:** 170808-4                      **Conc.:** 0.55 mg/ml

**Formulated in:** 40 mM Tris pH 8.0, 110 mM NaCl, 2.2 mM KCl, and 20% glycerol.

**Stability:** At least 12 months at  $-80^{\circ}\text{C}$ .  
 Avoid freeze/thaw cycles.

**References:**

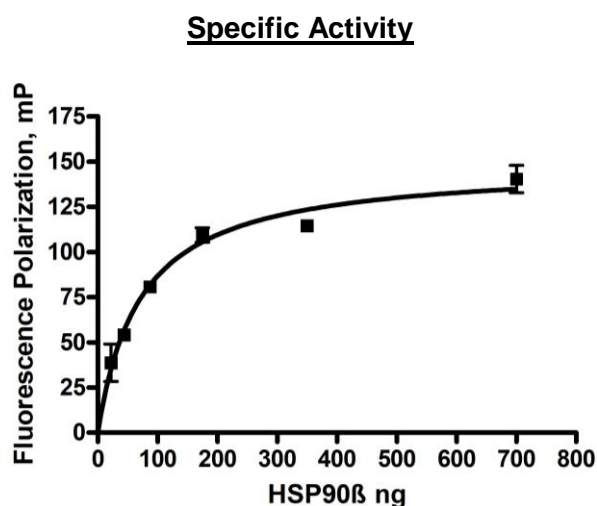
1. Milicevic, Z. *et al.*, *Int J Oncol.* 2008 Jun;**32(6)**:1169-78.
2. Chao, C.C. *et al.*, *J Cell Biochem.* 2008 Jul 1;**104(4)**:1286-96.

**Description:** Human Heat Shock Protein 90 $\beta$  also known as Heat Shock Protein 90 Beta Family Member Endoplasmic, and Tumor Rejection Antigen, GenBank Accession No. AY359878, a.a. 1-724 (full length) with C-terminal His.tag, expressed in an *E. coli* expression system. MW = 84 kDa.

**Assay Conditions:** Buffer contains 0.1 M HEPES, pH 7.4, 0.25 M MgCl<sub>2</sub>, 0.25 M KCl, 0.1M Na<sub>2</sub>MoO<sub>4</sub>, and 0.05% Triton X. Incubated for 120 minutes at room temperature. Fluorescence polarization is measured at exc470/em528.

**Application:** Useful for the study of enzyme kinetics, screening inhibitors, and selectivity profiling.

### Quality Assurance

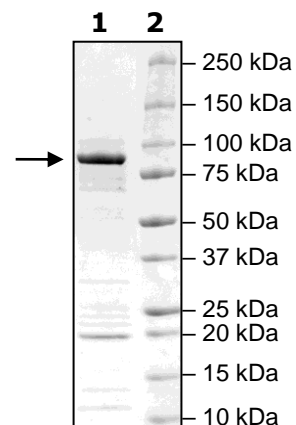


**4-20% SDS-PAGE**  
**Coomassie staining**

**Lane 1:**  
 2 $\mu\text{g}$  Hsp90 $\beta$   
**Lane 2:**  
 Protein Marker

**MW:** 84 kDa

**Purity:**  $\geq 70\%$



OUR PRODUCTS ARE FOR RESEARCH USE ONLY. NOT FOR DIAGNOSTIC OR THERAPEUTIC USE.

To place your order, please contact us by Phone **1.858.202.1401** Fax **1.858.481.8694**  
 Or you can Email us at: [info@bpsbioscience.com](mailto:info@bpsbioscience.com)  
 Please visit our website at: [www.bpsbioscience.com](http://www.bpsbioscience.com)