



6042 Cornerstone Court West, Suite B
San Diego, CA 92121
Tel: 1.858.202.1401
Fax: 1.858.481.8694
Email: info@bpsbioscience.com

Data Sheet

KRAS (G12R), His-Tag

Human, Recombinant, N-terminal His-tag
Catalog #: 100841
Lot #: 200810 **Conc.:** 2.40 mg/ml

Description: Human KRAS also known as C-K-RAS, CFC2, and K-RAS2A, GenBank Accession No. NM_033360, a.a. 2-186, with G12R mutation and N-terminal His-tag, expressed in an *E. coli* expression system. MW=23 kDa.

Formulated in: 40 mM Tris-HCl, pH 8.0, 110 mM NaCl, 2.2 mM KCl, 0.04% Tween20, 20% glycerol, 3 mM DTT.

Stability: At least 6 months at -80°C. Avoid freeze/thaw cycles.

References:

1. Lito, P., *et al.*, *Science*. 2016 Feb;**351(6273)**:604-608.
2. Dogan, S., *et al.*, *Clinical Cancer Research*. 2012 Nov;**18(22)**:6169-6177.

Quality Assurance

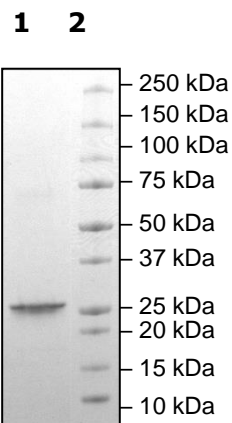
6-20% SDS-PAGE Coomassie staining

Lane 1:
KRas(G12R)

Lane 2:
Protein Marker

Purity: >90% →

MW: 23 kDa



OUR PRODUCTS ARE FOR RESEARCH USE ONLY. NOT FOR DIAGNOSTIC OR THERAPEUTIC USE.

To place your order, please contact us by Phone **1.858.202.1401** Fax **1.858.481.8694**
Or you can Email us at: info@bpsbioscience.com
Please visit our website at: www.bpsbioscience.com