

Description

Recombinant clonal stable CHO cell line constitutively expressing full length human folate receptor alpha (FOLR1, also known as FOLR, Genbank #NM_016725.3). Surface expression of FOLR1 was confirmed by flow cytometry.

Background

Folate receptor alpha (FOLR1) is a glycosylphosphatidylinositol (GPI)-anchored membrane protein that transports folate (vitamin B9) into cells. FOLR1 is overexpressed in multiple cancers such as cervical cancer, ovarian cancer, breast cancer, and brain carcinomas, and FOLR1 overexpression is associated with poor patient prognosis and increased cancer progression. The overexpression of FOLR1 in a variety of cancerous tissues makes it a valuable target for drug development. There are currently multiple drugs in clinical trials that target FOLR1.

Application

1. Screen and validate antibodies against FOLR1 for drug discovery and research.
2. Screen for or characterize compounds that regulate or inhibit FOLR1 signaling in a cellular context.

Materials Provided

Components	Format
2 vials of frozen cells	Each vial contains 2×10^6 cells in 1 ml of cell freezing medium (BPS Bioscience, #79796)

Parental Cell Line

CHO-K1 cells, Chinese Hamster Ovary, epithelial-like cells, adherent

Mycoplasma Testing

The cell line has been screened to confirm the absence of Mycoplasma species.

Materials Required but Not Supplied

These materials are not supplied with the cell line but are necessary for cell culture and cellular assays. BPS Bioscience's reagents are validated and optimized for use with this cell line and are highly recommended for best results. Media components are provided in the Media Formulations section below.

Media Required for Cell Culture

Name	Ordering Information
Thaw Medium 3	BPS Bioscience #60186
Growth Medium 3D	BPS Bioscience #79539

Storage Conditions

Cells are shipped in dry ice and should immediately be thawed or stored in liquid nitrogen upon receipt. Do not use a -80°C freezer for long term storage. Contact technical support at support@bpsbioscience.com if the cells are not frozen in dry ice upon arrival.

Media Formulations

For best results, it is *highly recommended* to use these validated and optimized media from BPS Bioscience. Other preparations or formulations of media may result in suboptimal performance.



Note: Thaw Media do *not* contain selective antibiotics. However, Growth Media *do* contain selective antibiotics, which are used for maintaining the presence of the transfected gene(s) over passages. Cells should be grown at 37°C with 5% CO₂. BPS Bioscience's cell lines are stable for at least 15 passages when grown under proper conditions.

Media Required for Cell Culture

Thaw Medium 3 (BPS Bioscience, #60186):

F-12K medium supplemented with 10% FBS, 1% Penicillin/Streptomycin.

Growth Medium 3D (BPS Bioscience, #79539):

F-12K medium supplemented with 10% FBS, 1% Penicillin/Streptomycin plus 1 mg/ml Geneticin.

Cell Culture Protocol

Cell Thawing

1. Swirl the vial of frozen cells for approximately 60 seconds in a 37°C water bath. As soon as the cells are thawed (it may be slightly faster or slower than 60 seconds), quickly transfer the entire contents of the vial to a tube containing 10 ml of pre-warmed Thaw Medium 3 (**no Geneticin**).
Leaving the cells in the water bath at 37°C for too long will result in rapid loss of viability.
2. Immediately spin down the cells at 300 x g for 5 minutes, remove the medium and resuspend the cells in 5 ml of pre-warmed Thaw Medium 3 (**no Geneticin**).
3. Transfer the resuspended cells to a T25 flask or T75 flask and incubate at 37°C in a 5% CO₂ incubator.
4. After 24 hours of culture, check for cell attachment and viability. Change medium to fresh Thaw Medium 3 (**no Geneticin**), and continue growing in a 5% CO₂ incubator at 37°C until the cells are ready to passage.
5. Cells should be passaged before they are fully confluent. At first passage and subsequent passages, use Growth Medium 3D (**contains Geneticin**).

Cell Passage

1. Aspirate the medium, wash the cells with phosphate buffered saline (PBS), and detach the cells from the culture vessel with 0.25% Trypsin/EDTA.
2. Once the cells have detached, add Growth Medium 3D (**contains Geneticin**) and transfer to a tube. Spin down cells at 300 x g for 5 minutes, remove the medium and resuspend the cells in Growth Medium 3D (**contains Geneticin**). Seed into new culture vessels at the desired sub-cultivation ratio of 1:6 to 1:8 weekly or twice per week.

Cell Freezing

1. Aspirate the medium, wash the cells with phosphate buffered saline (PBS), and detach the cells from the culture vessel with 0.25% Trypsin/EDTA.
2. Once the cells have detached, add Growth Medium 3D and count the cells.
3. Spin down the cells at 300 x g for 5 minutes, remove the medium and resuspend the cells in 4°C Freezing Medium (BPS Bioscience #79796, or 10% DMSO + 90% FBS) at ~2 x 10⁶ cells/ml.
4. Dispense 1 ml of cell aliquots into cryogenic vials. Place the vials in an insulated container for slow cooling and store at -80°C overnight.
5. Transfer the vials to liquid nitrogen the next day for storage.



Note: It is recommended to expand the cells and freeze at least 10 vials at an early passage for future use.

A. Validation Data

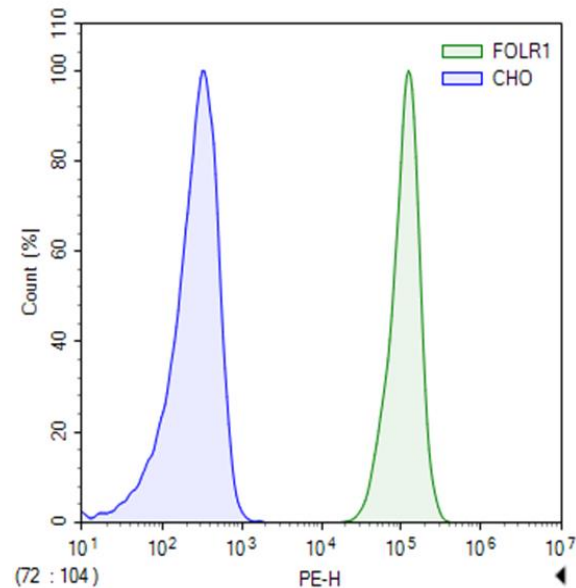


Figure 1: Expression of FOLR1 in FOLR1 CHO Cell Line. FOLR1 CHO cells (green) or parental CHO-K1 cells (blue) were stained with PE-labeled anti-human FOLR1 antibody (R&D Systems, #FAB5646P) and analyzed by flow cytometry. Y-axis is the % cell number. X-axis is the intensity of PE.

Sequence

>NP_057937.1 folate receptor alpha precursor [Homo sapiens]
 MAQRMTTQLLLLLVWVAVVGEAQTRIAWARTELLNVCMNAAKHHKKEKPGPEDKLHEQCRPWKRNACCSTNTSQAHKDVSYL
 YRFNWNHCGEMAPACKRHFHQDTCLYECSPNLGPWIQQVDQSWRKERVNLVPLCKEDCEQWWEDCRTSYTKSNWHKGW
 NWTSGFNKCAVGAACQPFHFYFPTPTVLCNEIWTHSYKVSNSYRSGSRCIQMWFDPAQGNPNEEVARFYAAAMSGAGPWAA
 WPFLLSLALMLLWLLS

References

1. Nawaz FZ, Kipreos ET. Emerging roles for folate receptor FOLR1 in signaling and cancer. *Trends Endocrinol Metab.* 2022; 33(3): 159-174.
2. Matsunaga Y, *et al.* Novel Anti-FOLR1 Antibody-Drug Conjugate MORAb-202 in Breast Cancer and Non-Small Cell Lung Cancer Cells. *Antibodies (Basel).* 2021; 10(1): 6.

License Disclosure

Visit bpsbioscience.com/license for the label license and other key information about this product.

Troubleshooting Guide

Visit bpsbioscience.com/cell-line-faq for detailed troubleshooting instructions. For all further questions, please email support@bpsbioscience.com.

Related Products

<i>Products</i>	<i>Catalog #</i>	<i>Size</i>
Growth medium 3D	79539	500 ml
Thaw Medium 3	60186	100 ml/500 ml