

## Data Sheet

### L3MBTL3

Human, recombinant, N-terminal His tag

**Catalog #:** 55014

Lot #: 130215-A      Conc.: 1.0 mg/ml

**Formulated in:** 40 mM Tris-HCl, pH 8.0, 110 mM NaCl, 2.2 mM KCl, 19 mM imidazole, 0.005% Tween-20, and 20% glycerol.

**Stability:** >6 months at -80°C

#### References:

1. James, L.I., *et al.*, *Nat Chem Biol.* 2013 Mar;**9(3)**:184-91.
2. Arai, S., Miyazaki, T., *EMBO J.* 2005 May 18;**24(10)**:1863-73.

#### Description:

Human lethal(3) malignant brain tumor-like protein 3 (L3MBTL3), GenBank Accession No. NM\_032438), a.a. 229-547 with N-terminal His tag, MW = 37.6 kDa, expressed in an *E. coli* cell expression system.

#### Application:

Useful for the study of Polycomb group (PcG) proteins, screening inhibitors, and selectivity profiling.

## Quality Assurance

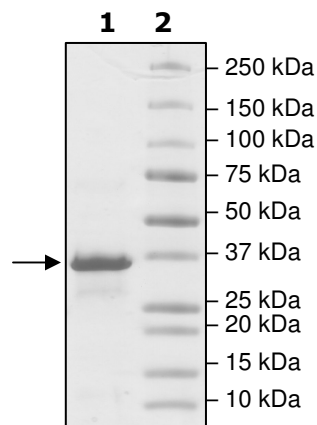
#### 4-20% SDS-PAGE Coomassie staining

**Lane 1:**  
8 µg L3MBTL3

**Lane 2:**  
Protein Marker

**MW:** 37.6 kDa

**Purity:** ≥88%



OUR PRODUCTS ARE FOR RESEARCH USE ONLY. NOT FOR DIAGNOSTIC OR THERAPEUTIC USE.

To place your order, please contact us by Phone **1.858.829.3082** Fax **1.858.481.8694**

Or you can Email us at: [info@bpsbioscience.com](mailto:info@bpsbioscience.com)

Please visit our website at: [www.bpsbioscience.com](http://www.bpsbioscience.com)



6044 Cornerstone Court West, Suite E  
San Diego, CA 92121  
Tel: 1.858.829.3082  
Fax: 1.858.481.8694  
Email: [info@bpsbioscience.com](mailto:info@bpsbioscience.com)

**Sequence:**

**MHHHHHHH**KKAWCWASYLEEEKAVAVPAKLFKEHQSFYKNGFKVGMKLEGVDPE  
HQSVCVLTVAEVCYRIKLHFDGYSDCYDFWVNADALDIHPVGWCEKTGHKLHPPK  
GYKEEEFNWQTYLKTCKAQAAPKSLFENQITVIPSGFRVGMKLEAVDKKNPSFICVA  
TVTDMVDNRFLVHFDNWDESYDYWCEASSPHIHPVGWCKEHRRTLITPPGYPNVKHF  
SWDKYLEETNSLPAPARAFKVKPPHGFQKKMKLEVVDKRNPMFIRVATVADTDDHR  
VKVHFDGWNNCYDYWIDADSPDIHPVGWCSKTGHPLQPPLSPL

OUR PRODUCTS ARE FOR RESEARCH USE ONLY. NOT FOR DIAGNOSTIC OR THERAPEUTIC USE.

To place your order, please contact us by Phone **1.858.829.3082** Fax **1.858.481.8694**  
Or you can Email us at: [info@bpsbioscience.com](mailto:info@bpsbioscience.com)  
Please visit our website at: [www.bpsbioscience.com](http://www.bpsbioscience.com)