

Data Sheet

L3MBTL1

Human, recombinant, N-terminal His tag
Catalog #: 55002
Lot #: 121017-D Conc.: 0.98 mg/ml

Formulated in: 40 mM Tris-HCl, pH 8.0,
110 mM NaCl, 2.2 mM KCl, and 20%
glycerol.

Stability: >6 months at -80°C

References:

1. Koga, H., *et al.*, *Oncogene*. 1999 Jul 1;**18(26)**:3799-809.
2. Trojer, P., *et al.*, *Cell*. 2007 Jun 1;**129(5)**:915-28.
3. Min, J., *et al.* *Nat. Structl. & Mol. Biol.* 2007;14:1229 – 1230.

Description:

Human lethal(3) malignant brain tumor-like protein 1 (L3MBTL1), GenBank Accession No. NM_015478), a.a. 191-530 with N-terminal His tag, MW = 39.6 kDa, expressed in an *E. coli* cell expression system.

Application:

Useful for the study of Polycomb group (PcG) proteins, screening inhibitors, and selectivity profiling.

Quality Assurance

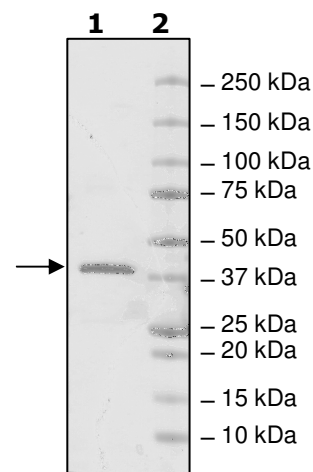
4-20% SDS-PAGE Coomassie staining

Lane 1:
2 µg L3MBTL1

Lane 2:
Protein Marker

MW: 39.6 kDa

Purity: ≥95%



OUR PRODUCTS ARE FOR RESEARCH USE ONLY. NOT FOR DIAGNOSTIC OR THERAPEUTIC USE.

To place your order, please contact us by Phone **1.858.829.3082** Fax **1.858.481.8694**

Or you can Email us at: info@bpsbioscience.com

Please visit our website at: www.bpsbioscience.com



6044 Cornerstone Court West, Suite E
San Diego, CA 92121
Tel: 1.858.829.3082
Fax: 1.858.481.8694
Email: info@bpsbioscience.com

Sequence:

MHHHHHHHEWSSSQPATGEKKECWSWESYLEEQKAITAPVSLFQDSQAVTHNKNGF
KLGMKLEGIDPQHPSMYFILTVAEVCGYRLRLHFDGYSECHDFWVNANSPDIHPAGW
FEKTGHKLQPPKGYKEEFSWSQYLRSTRAQAAPKHLFVSQSHSPPPLGFQVGMKL
EAVDRMNPSLVCVASVTDVVDSRFLVHFDNWDDTYDYWCDPSSPYIHPVGCQKQG
KPLTPPQDYPDPNFCWEKYLEETGASAVPTWAFKVRPPHSFLVNMKLEAVDRRNP
ALIRVASVEDVEDHRIKIHF DGWSHG YDFWIDADHPDIHPAGWCSKTGHPLQPPLGPR
EPSSASPGG

OUR PRODUCTS ARE FOR RESEARCH USE ONLY. NOT FOR DIAGNOSTIC OR THERAPEUTIC USE.

To place your order, please contact us by Phone **1.858.829.3082** Fax **1.858.481.8694**
Or you can Email us at: info@bpsbioscience.com
Please visit our website at: www.bpsbioscience.com