

Data Sheet

GLS2, His-tag

Human, Recombinant, C-terminal His-tag
Catalog #: 71242
Lot #: 200109-1 **Conc.:** 0.12 mg/ml

Formulated in: 40 mM Tris-HCl pH 8.0, 110 mM NaCl, 2.2 mM KCl, 0.04% Tween-20, 20% glycerol, variable Imidazole.

Stability: At least 6 months at -80°C . Avoid freeze/thaw cycles.

References:

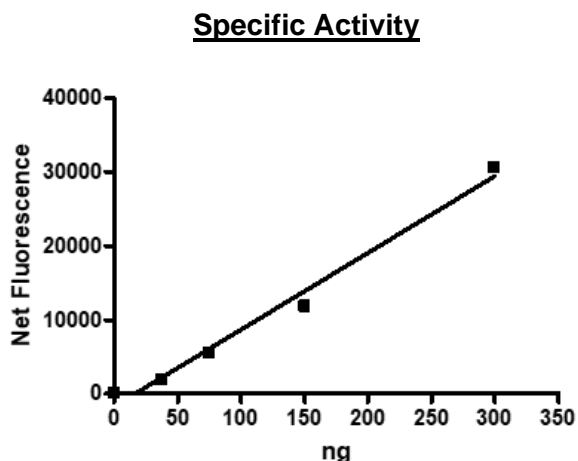
- Gross, M.I. *et al.*, *Mol. Cancer Ther.* 2014; **13**: 890.
- Szeliga, M. *et al.*, *Tumor. Biol.* 2014; **35**: 1855-1862.

Description: Human glutaminase liver isoform (liver, mitochondria), also known as GLS2, L-glutaminase, and L-glutaminase amidohydrolase, GenBank Accession No. NM_013267, a.a. 15-602(end), with C-terminal His-tag, expressed in an *E. coli* cell expression system, MW=66 kDa .

Assay Conditions: Assay was performed according to BPS catalog #79596 with a modified incubation time of 10 minutes and GLS2 titrated from 300 ng/rxn – 0 ng/rxn.

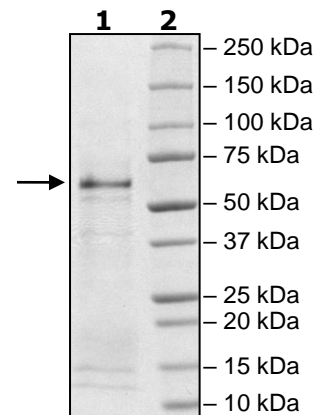
Applications: Useful for the study of enzyme kinetics and for inhibitor screening.

Quality Assurance



**4-20% SDS-PAGE
Coomassie staining**

Lane 1:
2 μg GLS2
Lane 2:
Protein Marker
MW: 66 kDa
Purity: $\geq 75\%$



OUR PRODUCTS ARE FOR RESEARCH USE ONLY. NOT FOR DIAGNOSTIC OR THERAPEUTIC USE.

To place your order, please contact us by Phone **1.858.202.1401** Fax **1.858.481.8694**
 Or you can Email us at: info@bpsbioscience.com
 Please visit our website at: www.bpsbioscience.com