

## Data Sheet

### IDO2, His-tag

Human, recombinant, N-terminal His-tag  
**Catalog #:** 71194  
**Lot #:** 150727-2      **Conc.:** 2.3 mg/ml

**Formulated in:** 40 mM Tris-HCl, pH 8.0,  
 110 mM NaCl, 2.2 mM KCl, 20% glycerol

**Stability:** At least 6 months at  $-80^{\circ}\text{C}$ . *Avoid freeze/thaw cycles. Storing diluted enzyme is not recommended, if necessary, use carrier protein (BSA 0.1 – 0.5%).*

**References:**

1. Metz, R., *et al.*, *Canc. Res.* 2007; **67(15)**: 7082-7087.
2. Witkiewicz, A.K., *et al.*, *J. Am. Coll. Surgeons.* 2009; **208(5)**: 781-787.
3. Flick, H.E., *et al.*, *Int. Nat. J. Tryptophan Res.* 2013; **6**: 35-45.

**Description:**

Human IDO2, also known as Indoleamine 2,3-dioxygenase 2, GenBank Accession No. NM\_194294, a.a. 15-420(end) with an N-terminal His-tag, expressed in an *E. coli* cell expression system. MW = 46 kDa.

**Assay Description:**

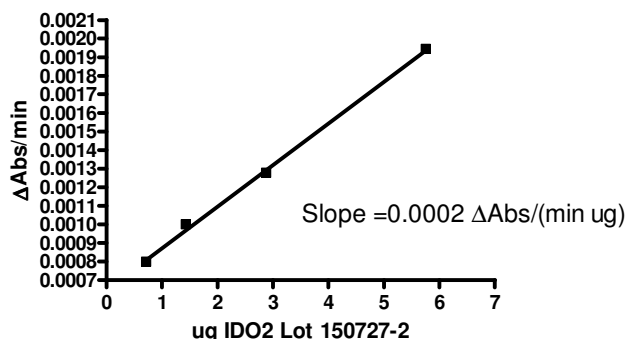
IDO2 activity was confirmed using the IDO2 Inhibitor Screening Assay Kit (BPS Cat. #72022) and following the protocol provided.

**Application:**

Useful for studying enzyme kinetics, substrate specificity, and screening inhibitors.

## Quality Assurance

**Activity Assay**

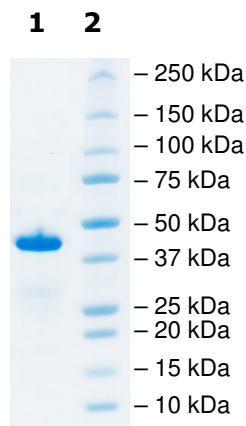


**4-20% SDS-PAGE**

**Coomassie staining**

**Lane 1:**  
 IDO2  
 (2.4 ug loaded) →

**Lane 2:**  
 Protein Marker



**Purity:** ≥90%

OUR PRODUCTS ARE FOR RESEARCH USE ONLY. NOT FOR DIAGNOSTIC OR THERAPEUTIC USE.

To place your order, please contact us by Phone **1.858.829.3082** Fax **1.858.481.8694**  
 Or you can Email us at: [info@bpsbioscience.com](mailto:info@bpsbioscience.com)  
 Please visit our website at: [www.bpsbioscience.com](http://www.bpsbioscience.com)



6044 Cornerstone Court W, Ste E  
San Diego, CA 92121  
**Tel:** 1.858.829.3082  
**Fax:** 1.858.481.8694  
**Email:** [info@bpsbioscience.com](mailto:info@bpsbioscience.com)

## *Sequence*

**MHHHHHH**AHAMENSWTISKEYHIDEEVGFALPNPQENLPDFYNDWMFIAKHLPLDIES  
GQLRERVEKLNMLSIDHLTDHKSQRLARLVLCITMAYVWVGKGGHDVVRKVLPRNIAV  
PYCQLSKKLELPPILVYADCVLANWKKKDPNKPLTYENMDVLFSDGDCSKGFFLV  
SLLVEIAAASAIKVIPTVFKAMQMQRDTLLKALLEIASCLEKALQVFHQIHDHVNPKA  
FFSVLRIYLSGWKGNPQLSDGLVYEGFWEDPKEFAGGSAGQSSVFQCFDVLLGIQQT  
AGGGHAAQFLQDMRRYMPPAHRNFLCSLESNPSVREFVLSKGDAGLREAYDACVK  
ALVSLRSYHLQIVTKYILIPASQQPKENKTSSEDPKLEAKGTGGTDLMNFLKTVRSTTE  
KSLLKEG

Black: IDO1 (a.a. 2-403(end))

Red: 6x His including first M

OUR PRODUCTS ARE FOR RESEARCH USE ONLY. NOT FOR DIAGNOSTIC OR THERAPEUTIC USE.

To place your order, please contact us by Phone **1.858.829.3082** Fax **1.858.481.8694**

Or you can Email us at: [info@bpsbioscience.com](mailto:info@bpsbioscience.com)

Please visit our website at: [www.bpsbioscience.com](http://www.bpsbioscience.com)