

Data Sheet

GLS1, His-tag

Human, recombinant, N-terminal His-tag
Catalog #: 71102
Lot #: 150622 **Conc.:** 0.90 mg/ml

Formulated in: 40 mM Tris-HCl, pH 8.0, 110 mM NaCl, 2.2 mM KCl, 0.04% Tween-20, and 20% glycerol

Stability: At least 6 months at -80°C. Avoid freeze/thaw cycles. Storing diluted enzyme is not recommended, if necessary, use carrier protein (BSA 0.1 – 0.5%).

References:

1. Van den Heuvel, A.P., *et al.*, *Cancer Biol. Ther.* 2012;**13**(12):1185-1194.
2. Thangavelu, K., *et al.*, *Proc. Natl. Acad. Sci. USA* 2012;**109**(2):7705-7710.

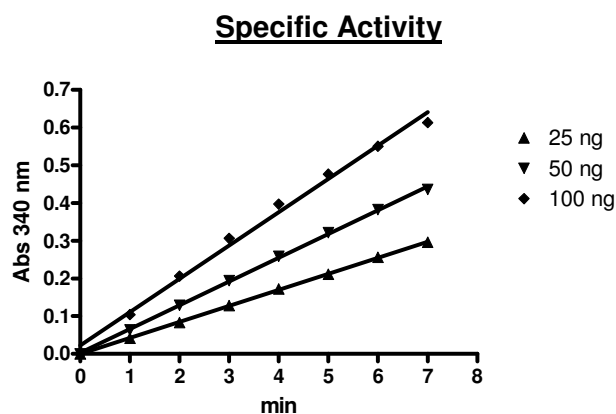
Description: Human glutaminase (GLS), also known as glutaminase transcript variant 1 (GLS1), GAC, GAM and KGA, GenBank Accession No. NM_014905, a.a. 17-669(end), with N-terminal His-tag, MW 72.5 kDa, expressed in an *E. coli* cell expression system.

Specific Activity: 25 nmol/min/μg

Assay conditions: The reaction mixture contained 100 mM Tris, pH 8.6, 150 mM K₂HPO₄, 25 mM L-glutamine, 2 mM NAD⁺, 4 units of GDH, and various amounts of GLS1 in a volume of 200 μL. Reactions were initiated with the addition of GLS1, and the increase in NADH absorbance at 340 nm was continuously monitored for 7 min at 37°C. Molar extinction coefficient of NADH is 6,220 M⁻¹cm⁻¹.

Application: Useful for the study of enzyme kinetics, screening inhibitors, and selectivity profiling.

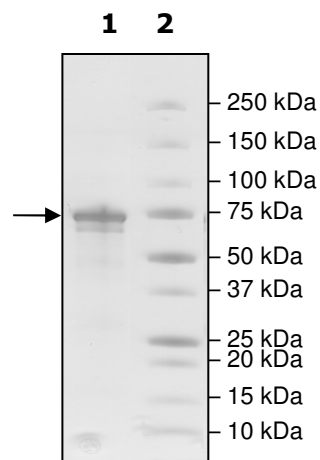
Quality Assurance



4-20% SDS-PAGE
Coomassie staining

Lane 1:
 4 μg GLS1
Lane 2:
 Protein Marker

MW: 72.5 kDa
Purity: ≥80%



OUR PRODUCTS ARE FOR RESEARCH USE ONLY. NOT FOR DIAGNOSTIC OR THERAPEUTIC USE.

To place your order, please contact us by Phone **1.858.829.3082** Fax **1.858.481.8694**
 Or you can Email us at: info@bpsbioscience.com
 Please visit our website at: www.bpsbioscience.com



6044 Cornerstone Court West, Suite E
San Diego, CA 92121
Tel: 1.858.829.3082
Fax: 1.858.481.8694
Email: info@bpsbioscience.com

Sequence:

MHHHHHSPAGVSATLRRRAQPLVTL CRRPRGGGRPAAGPAAAARLHPWWGGGGWP
AEPLARGLSSSPSEILQELGKGSTHPQPGVSPPAAPAAPGPKDGPGETDAFGNSEGKE
LVASGENKIKQGLLPSLEDLLFYTIAEGQEKIPVHKFITALKSTGLRTSDPRLKECMDML
RLTLQTTSDGVMLDKDLFKKCVQSNIVLLTQAFRRKFVIPDFMSFTSHIDELYESAKKQS
GGKVADYIPQLAKFSPDLWGVSVCTVDGQRHSTGDTKVPFCLQSCVKPLKYAIAVNDL
GTEYVHRYVGKEPSGLRFNKLFLNEDDKPHNPMVNAGAI VVTSLIKQGVNNAEKFDYV
MQFLNKMAGNEYVGF SNATFQSERESGDRNFAIGYYLKEKKCFPEGTDMVGILDFYFQ
LCSIEVTCESASVMAATLANGGFCPITGERVLSPEAVRNTLSLMHSCGMYDFSGQFAFH
VGLPAKSGVAGGILLVVPNVMGMMCWSPPLDKMGNSVKGIHFCHDLVSLCNFHNYDN
LRHFAKKLDPRREGGDQRVKSVINLLFAAYTGDVSALRRFALSAMDMEQRDYDSRTAL
HVAAAEGHVEVVKFLLEACKVNPFPKDRWNNTPMDEALHFGHHDVFKILQEYQVQYTP
QGSDNGKENQTVHKNL DGLL

OUR PRODUCTS ARE FOR RESEARCH USE ONLY. NOT FOR DIAGNOSTIC OR THERAPEUTIC USE.

To place your order, please contact us by Phone **1.858.829.3082** Fax **1.858.481.8694**
Or you can Email us at: info@bpsbioscience.com
Please visit our website at: www.bpsbioscience.com