

## Data Sheet

### LOXL2, FLAG-tag

Human, recombinant, C-terminal Flag-tag

**Catalog #:** 60502

**Lot #:** 140402-G      **Conc.:** 0.26 mg/ml

**Formulated in:** 40 mM Tris-HCl, pH 8.0, 110 mM NaCl, 2.2 mM KCl, 0.04% Tween-20, and 20% glycerol

**Stability:** At least 6 months at  $-80^{\circ}\text{C}$ . *Avoid freeze/thaw cycles. Storing diluted protein is not recommended, if necessary, use carrier protein (BSA 0.1 – 0.5%).*

#### References:

1. Peng L. et al., *Carcinogenesis* **30** (10), 1660-1669 (2009).
2. Fujimoto E. and Tajima S. *J. Dermatol. Sci.* **55** (2), 91-98 (2009).

#### Description:

Human LOXL2 (GenBank Accession No. NM\_002318), amino-acids 500-end, with C-terminal Flag tag MW = 32 kDa, expressed in a baculovirus-infected Sf9 cell expression system.

#### Application:

Useful for the study of enzyme kinetics, screening inhibitors, and selectivity profiling.

## Quality Assurance

### 4-20% SDS-PAGE Coomassie staining

**Lane 1:**

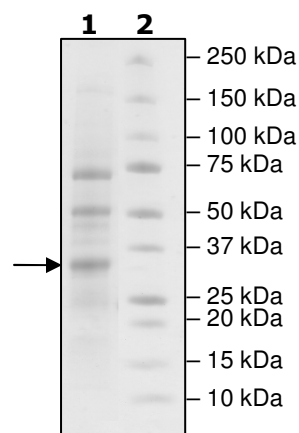
2  $\mu\text{g}$  LOXL2

**Lane 2:**

Protein Marker

**MW:** 32 kDa

**Purity:**  $\geq 34\%$



OUR PRODUCTS ARE FOR RESEARCH USE ONLY. NOT FOR DIAGNOSTIC OR THERAPEUTIC USE.

To place your order, please contact us by Phone **1.858.829.3082**, Fax **1.858.481.8694**

Or you can Email us at: [info@bpsbioscience.com](mailto:info@bpsbioscience.com)

Please visit our website at: [www.bpsbioscience.com](http://www.bpsbioscience.com)