

## Data Sheet

### ALOX-15, FLAG-tag

Human, recombinant, N-terminal FLAG-tag  
**Catalog #:** 50220  
**Lot#:**160420-A      **Conc.:** 0.25 mg/ml

**Formulated in:** 50mM Tris-HCl, pH 8.0,  
138mM NaCl, 2.7mM KCl, and 100µg/mL  
FLAG peptide..

**Stability:** At least 6 months at -80°C. *Avoid freeze/thaw cycles. Storing diluted enzyme is not recommended, if necessary, use carrier protein (BSA 0.1 – 0.5%).*

#### References:

1. Jiang, W.G., *et al.* (2006). *Prostaglandins Leukot Essent Fatty Acids*. **74 (4)**: 235-45.
2. Sigal, E., *et al.* (1988). *Biochem. Biophys. Res. Commun.* **157 (2)**: 457-64.
3. Bhattacharya S, *et al.* (2009). *Tumour Biol.* **30(4)**:185-99.

**Description:** ALOX-15, also known as 15LOX-1, omega-6 lipoxygenase, or arachidonate15-lipoxygenase (GenBank Accession No. NM\_001140), a.a. 2- 662(end), with an N-terminal FLAG-tag, MW=75 kDa, expressed in Sf9 insect cells via a baculovirus expression system.

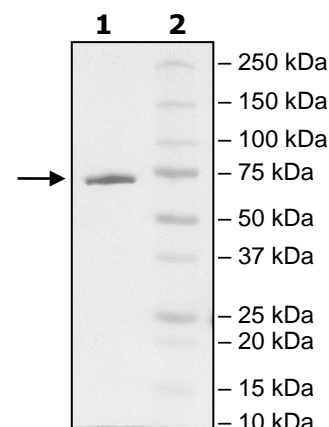
**Application:** Suitable for binding studies, as an immunogen, or for Western blotting.

## Quality Assurance

### 4-20% SDS-PAGE Coomassie staining

**Lane 1:**  
2 µg ALOX15  
**Lane 2:**  
Protein Marker

**MW:** 76 kDa  
**Purity:** >90%



OUR PRODUCTS ARE FOR RESEARCH USE ONLY. NOT FOR DIAGNOSTIC OR THERAPEUTIC USE.

To place your order, please contact us by Phone **1.858.202.1401** Fax **1.858.481.8694**

Or you can Email us at: [info@bpsbioscience.com](mailto:info@bpsbioscience.com)

Please visit our website at: [www.bpsbioscience.com](http://www.bpsbioscience.com)