

## Data Sheet

### ROR1, Fc-Fusion (IgG1), Avi-Tag

Human, Recombinant, C-terminal Fc-Avi-Tag

**Catalog #:** 79481**Lot#:** 180228**Conc.:** 0.7 mg/ml**Formulated in:** 8 mM Phosphate, pH 7.4, 110 mM NaCl, 2.2 mM KCl, and 20% glycerol.**Stability:** At least 6 months at  $-80^{\circ}\text{C}$ . Avoid freeze/thaw cycles.**References:**

1. Fukuda, T., *et al.*, *PNAS*. 2007 Dec; **105(8)**: 3047-3052.
2. Hudecek, M., *et al.*, *Clinical Cancer Research*. 2013 Jun; **19(12)**: 3109.

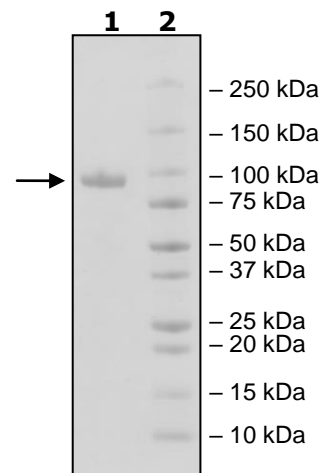
**Description:**

Human ROR1, also known as receptor tyrosine kinase-like orphan receptor 1, neurotrophic tyrosine kinase, and receptor-related 1 (NTRKR1), GenBank Accession No. NM\_005012, a.a 24-403, with C-terminal Avi-Tag<sup>TM</sup> fused to the Fc portion of Human IgG1 and expressed in a HEK293 cell expression system. MW = 71 kDa. This protein runs at a higher apparent M.W. by SDS-PAGE due to glycosylation.

### Quality Assurance

**4-20% SDS-PAGE  
Coomassie staining**

**Lane 1:**  
4 $\mu\text{g}$  ROR1  
**Lane 2:**  
Protein Marker  
**MW:**  
71kDa + glycans  
**Purity:**  $\geq 90\%$



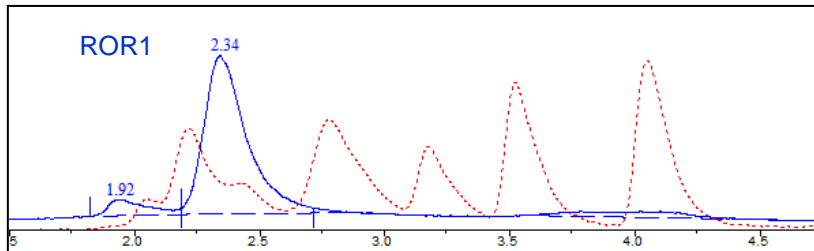
OUR PRODUCTS ARE FOR RESEARCH USE ONLY. NOT FOR DIAGNOSTIC OR THERAPEUTIC USE.

To place your order, please contact us by Phone **1.858.829.3082** Fax **1.858.481.8694**Or you can Email us at: [info@bpsbioscience.com](mailto:info@bpsbioscience.com)Please visit our website at: [www.bpsbioscience.com](http://www.bpsbioscience.com)



6042 Cornerstone Court W, Ste B  
San Diego, CA 92121  
**Tel:** 1.858.829.3082  
**Fax:** 1.858.481.8694  
**Email:** info@bpsbioscience.com

### Gel Filtration Curve



<10% Aggregation

OUR PRODUCTS ARE FOR RESEARCH USE ONLY. NOT FOR DIAGNOSTIC OR THERAPEUTIC USE.

To place your order, please contact us by Phone **1.858.829.3082** Fax **1.858.481.8694**  
Or you can Email us at: [info@bpsbioscience.com](mailto:info@bpsbioscience.com)  
Please visit our website at: [www.bpsbioscience.com](http://www.bpsbioscience.com)