

Data Sheet

CK1 ϵ , GST -Tag

Human, Recombinant, with N-terminal
GST-tag

Catalog #: 79349

Lot #: 171023 **Conc.:** 0.1 mg/ml

Formulated in: 50mM Tris-HCL, pH 7.5,
150mM NaCl, 10mM glutathione, 0.1mM
EDTA, 0.25mM DTT, 0.1mM PMSF, 25%
glycerol.

Stability: At least 6 months at -80°C .
Avoid freeze/thaw cycles.

References: (add references)

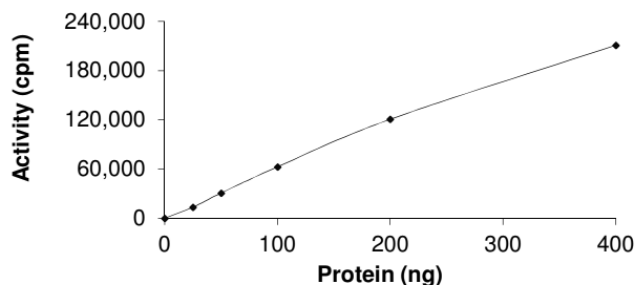
1. von Blume, J., *et al.*, *EMBO J*
2007;**26(22)**:4619-33.
2. Grozav. A G, *et al.*, *Nucleic Acids*
Res. 2009;**37(2)**:382-92.

Description: Full length recombinant
human CK1 ϵ , also known as CSNK1E,
HCKIE, MGC10398, and CK1E. Genbank
Accession NM_001894 N-terminal GST-
tag, expressed in Sf9 cells via a
baculovirus expression system. MW =
72kDa.

Applications: Useful for the kinase assay
kits and western blotting.

Quality Assurance

Specific Activity

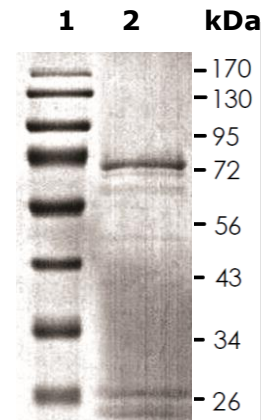


10% SDS-PAGE Coomassie staining

Lane 1:
Protein Marker

Lane 2:
CK1 ϵ

MW: 72 kDa
Purity: $\geq 70\%$



OUR PRODUCTS ARE FOR RESEARCH USE ONLY. NOT FOR DIAGNOSTIC OR THERAPEUTIC USE.

To place your order, please contact us by Phone **1.858.829.3082** Fax **1.858.481.8694**

Or you can Email us at: info@bpsbioscience.com

Please visit our website at: www.bpsbioscience.com