

## Data Sheet

### CERK

Human, recombinant, C-terminal FLAG-tag

**Catalog #:** 40617

**Lot#:** 110427-50      **Conc.:** 0.4 mg/ml

**Formulated in:** 40 mM Tris-HCl, pH 8.0,  
110 mM NaCl, 2.2 mM KCl, 40 µg/ml Flag  
peptide, 20% glycerol and 3 mM DTT.

**Stability:** >6 months at -80°C

#### **References:**

1. Mitra, P. *et al.*, *FEBS Lett.* **581** (4), 735-740 (2007)
2. Kim, T.J. *et al.*, *Biochem. Biophys. Res. Commun.* **342** (2), 611-617 (2006)

#### **Description:**

Human ceramide kinase (CERK) (GenBank Accession No. NM\_022766), 1-537(end) with C-terminal Flag tag, MW= 60 kDa, expressed in baculovirus expression system.

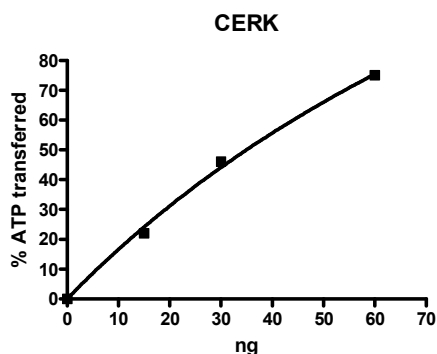
**Specific Activity:** 142 pmole/min/µg.

**Assay conditions:** CERK activity was measured at 37 °C for 25 min in a buffer (20 mM HEPES pH7.2, 80 mM KCl, 3 mM CaCl<sub>2</sub>, 10 mM MgCl<sub>2</sub>, 2 mM DTT, 5 µM ATP) using a  $\mu$ -Octylglucoside mixed micellar assay with 100 µM Ceramide (BPS# 40618). ATP reduction was detected using Kinase-Glo® Luminescent Kinase Assay Platform (Promega, Madison, WI).

#### **Application:**

Useful for the study of enzyme kinetics, screening inhibitors, and selectivity profiling.

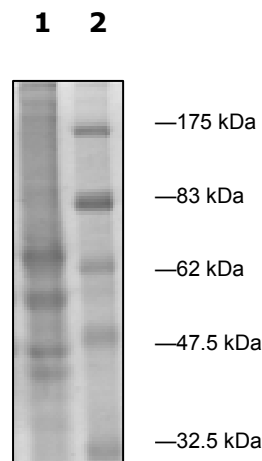
## **Quality Assurance**



### **10% SDS-PAGE** **Coomassie staining**

**Lane 1:**  
5.6 µg CERK  
**Lane 2:**  
Protein Marker  
BioLabs (#P7708L)

**MW:** 60 kDa  
**Purity:** ≥40%



OUR PRODUCTS ARE FOR RESEARCH USE ONLY. NOT FOR DIAGNOSTIC OR THERAPEUTIC USE.

To place your order, please contact us by Phone **1.858.829.3082** Fax **1.858.481.8694**

Or you can Email us at: [info@bpsbioscience.com](mailto:info@bpsbioscience.com)

Please visit our website at: [www.bpsbioscience.com](http://www.bpsbioscience.com)