

Data Sheet

SPHK1, His-tag

Human, recombinant, N-terminal His-tag

Catalog #: 40610

Lot #: 190719-2 **Conc.:** 0.20 mg/ml

Formulated in: 40 mM Tris-HCl, pH 8.0, 110 mM NaCl, 2.2 mM KCl, 200 mM Imidazole, 3 mM DTT and 20% glycerol.

Stability: At least 6 months at -80°C . *Avoid freeze/thaw cycles.*

References:

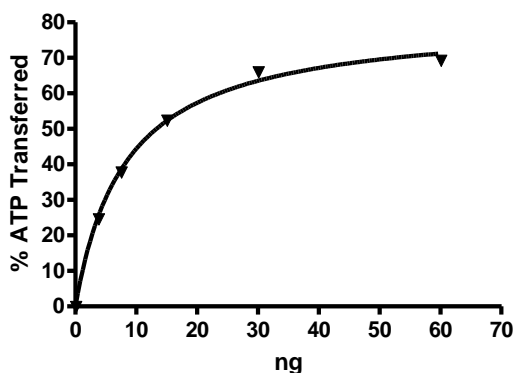
1. Delon, C., *et al.*, *J. Biol. Chem* **279** (43): 44763-44774 (2004)
2. Taha, TA *et al.*, *FASEB J.* **20**(3):482-4 (2005)

Description: Human Sphingosine kinase 1, also known as SphK1 and SPK1, GenBank Accession No. AF200328, a.a. 1-384 (full length), with N-terminal His-tag, expressed in a Baculovirus infected Sf9 cell expression system. MW=47 kDa.

Specific Activity: 1900 pmole/min/ μg .
Assay Conditions: Assay was done in Kinase buffer containing 1 mM DTT using 20 μM Sphingosine and 20 μM ATP. Reaction was done at 30°C for 35 min. Amount of ATP transferred was calculated using Kinase-Glo reagent (Promega).

Application: Useful for the study of enzyme kinetics, screening inhibitors, and selectivity profiling.

Quality Assurance

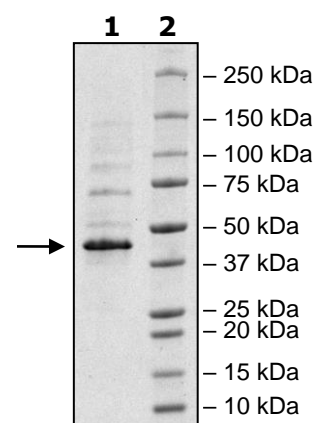


4-20% SDS-PAGE **Coomassie staining**

Lane 1:
2 μg SphK1
Lane 2:
Protein Marker

MW: 47 kDa

Purity: $\geq 80\%$



OUR PRODUCTS ARE FOR RESEARCH USE ONLY. NOT FOR DIAGNOSTIC OR THERAPEUTIC USE.

To place your order, please contact us by Phone **1.858.202.1401** Fax **1.858.481.8694**

Or you can Email us at: info@bpsbioscience.com

Please visit our website at: www.bpsbioscience.com