

Data Sheet

PKM1 (PKM2/Variant 2), His-tag

Human, recombinant, N-terminal His-tag
Catalog: 40502
Lot#: 110823 **Conc.:** 1.8 mg/ml

Formulated in: 40 mM Tris-HCl, pH 8.0,
 110 mM NaCl, 2.2 mM KCl, 66 mM
 Imidazole, 20% Glycerol, and 3 mM DTT.

Stability: At least 6 months at -80°C . *Avoid
 freeze/thaw cycles.*

References:

1. Parkison C. et al., Biochem Biophys Res Commun. **179(1)** ; 668-74 (1991).
2. Bluemlein K. et al., Oncotarget. 2011 May 22.

Description:

PKM1 GenBank Accession No. NM_182470), full length with N-terminal His tag, MW=59 kDa, expressed in a *E. coli* expression system.

Specific Activity: 54 pmol/min/ μg .

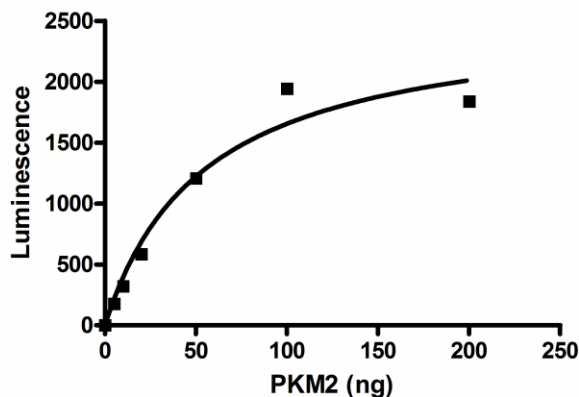
Assay conditions: A 50 μl reaction is conducted in a buffer containing 50 mM Tris (pH 7.4), 10 mM MgCl_2 , 50 mM KCl, 2 mM ADP, 10 mM phosphoenolpyruvate (PEP) at room temperature for 15 min. ATP production is detected using Kinase-Glo[®] Luminescent Kinase Assay Platform.

Application:

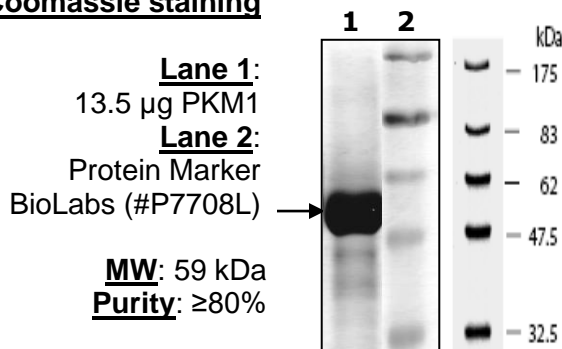
Useful for the study of enzyme kinetics, screening inhibitors, and selectivity profiling.

Quality Assurance

Specific Activity



**10% SDS-PAGE
Coomassie staining**



OUR PRODUCTS ARE FOR RESEARCH USE ONLY. NOT FOR DIAGNOSTIC OR THERAPEUTIC USE.
 To place your order, please contact us by Phone **1.858.202.1401** Fax **1.858.481.8694**
 Or you can Email us at: info@bpsbioscience.com
 Please visit our website at: www.bpsbioscience.com