

## Data Sheet

### **Abl-1**

Human, recombinant, N-terminal His-tag

**Catalog #:** 40411

**Lot #:** 130412

**Conc:** 0.37 mg/ml

**Formulated in:** 40 mM Tris-HCl, pH 8.0,  
110 mM NaCl, 2.2 mM KCl, 0.04% Tween-  
20, 3 mM DTT, 200 mM Imidazole, and  
20% glycerol.

**Stability:** >6 months at -80 °C

**References:**

1. Cao, C., *et al.* 2003. *J. Biol. Chem.* **278(15)**: 12961-7.
2. Yano, H., *et al.* 2000. *J. Neurosci. Res.* **59(3)**: 356-364.

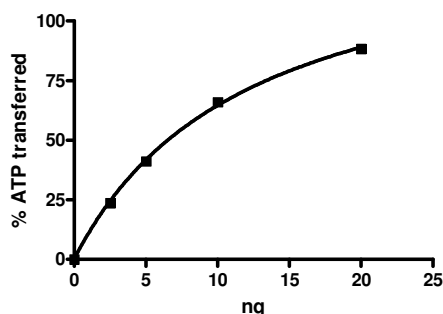
**Description:** Human Abelson murine leukemia viral oncogene homolog 1 (Abl-1) (GenBank Accession No. NM\_007313), amino acids 248-531, with N-terminal His-tag, MW = 33 kDa, expressed in a Baculovirus-infected Sf9 cell expression system.

**Specific Activity:** 2,700 pmoles/min/μg. Assay was done in Kinase buffer containing 0.2 mM DTT using Abltide substrate (0.2 mg/ml) and 20 mM ATP. Reaction was done at 30°C for 30 min. Amount of ATP transferred was calculated using Kinase-Glo® reagent (Promega)

**Application:** Useful for the study of enzyme kinetics, screening inhibitors, and selectivity profiling.

## Quality Assurance

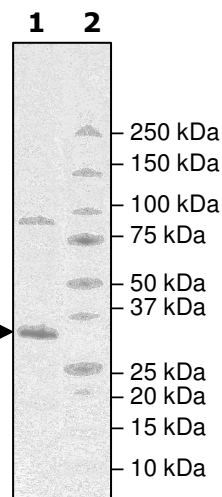
### Abl-1 Specific Activity



### 4-20% SDS-PAGE Coomassie staining

**Lane 1:**  
2.5 μg  
**Lane 2:**  
Protein Marker

**MW:** 33 kDa  
**Purity:** ≥65%



OUR PRODUCTS ARE FOR RESEARCH USE ONLY. NOT FOR DIAGNOSTIC OR THERAPEUTIC USE.

To place your order, please contact us by Phone **1.858.829.3082** Fax **1.858.481.8694**

Or you can Email us at: [info@bpsbioscience.com](mailto:info@bpsbioscience.com)

Please visit our website at: [www.bpsbioscience.com](http://www.bpsbioscience.com)