

## Data Sheet

### ERK2

Human, recombinant, N-terminal GST tag

**Catalog #:** 40299

**Lot #:** 120119      **Conc.:** 0.1 mg/ml

**Formulated in:** 50 mM Tris-HCl, pH 7.5, 150 mM NaCl, 0.1 mM EDTA, 0.1 mM EGTA, 0.1 mM PMSF, 25% glycerol, and 0.25 mM DTT.

**Stability:** >12 months at -80°C

**References:**

1. Boulton, T.G. et al., *Biochemistry*. Jan; **30(1)**: 278-286 (1991).

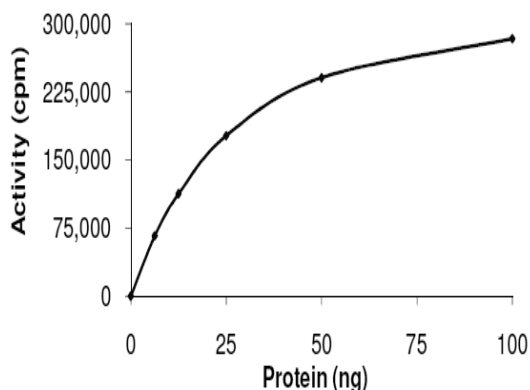
**Description:** Human ERK2, also known as MAPK1 or MAPKp42, GenBank Accession No. NM\_002745, full length, with N-terminal GST tag, MW=68 kDa, expressed in *E. coli* and activated by MEK1 *in vitro*.

**Specific Activity:** 700 pmol/min/μg

**Assay Buffer:** 5 mM MOPS, 2.5 mM β-glycerophosphate, 5 mM MgCl<sub>2</sub>, 1 mM EGTA, 0.4 mM EDTA, 0.05 mM DTT, 2 mM ATP. Incubate ERK2 with 0.25 mg/ml Myelin basic Protein (substrate) and [<sup>33</sup>P]-ATP at 30°C for 15 minutes, then spot reaction on phosphocellulose paper, fix in 1% phosphoric acid, and assay with a scintillation counter.

**Application:** Useful for the study of enzyme kinetics, screening inhibitors, and selectivity profiling.

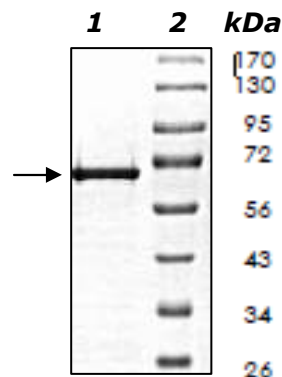
## Quality Assurance



### 10% SDS-PAGE Coomassie staining

**Lane 1:**  
ERK2  
**Lane 2:**  
Protein Marker

**MW:** 68 kDa  
**Purity:** ≥95%



OUR PRODUCTS ARE FOR RESEARCH USE ONLY. NOT FOR DIAGNOSTIC OR THERAPEUTIC USE.

To place your order, please contact us by Phone 1.858.829.3082 Fax 1.858.481.8694

Or you can Email us at: [info@bpsbioscience.com](mailto:info@bpsbioscience.com)

Please visit our website at: [www.bpsbioscience.com](http://www.bpsbioscience.com)